

**TECHNICAL MANUAL**

**ORGANIZATIONAL, DIRECT AND GENERAL  
SUPPORT MAINTENANCE REPAIR  
PARTS AND SPECIAL TOOLS LIST  
(INCLUDING DEPOT MAINTENANCE REPAIR  
PARTS AND SPECIAL TOOLS)  
FOR  
REFRIGERATION UNIT, ELECTRIC MOTOR DRIVEN  
9,000 BTU  
MODEL CH609-31  
NSN 4110-01-014-4646**

**This Copy Is a Reprint Which Includes Current  
pages from Changes 1 through 5.**

**HEADQUARTERS, DEPARTMENT OF THE ARMY  
6 JULY 1979**

CHANGE  
NO. 7

HEADQUARTERS  
DEPARTMENT OF THE ARMY  
WASHINGTON, DC, 29 April 1994

Organizational, Direct and General Support Maintenance  
Repair Parts and Special Tools List  
(Including Depot Maintenance Repair Parts and Special Tools)  
for  
REFRIGERATION UNIT, ELECTRIC MOTOR DRIVEN  
9,000 BTU, MODEL CH609-31, NSN 4110-01-014-4646

DISTRIBUTION STATEMENT A: Approved for public release; distribution is unlimited

TM 5-4110-231-24P, 6 July 1979, is changed as follows:

1. Remove and insert pages as indicated below. New or changed text material is indicated by a vertical bar in the margin. An illustration change is indicated by a miniature pointing hand.

Remove pages

9 and 10  
34 through 36  
38 through fig 13  
45 through 48

Insert pages

9 and 10  
34 through 36  
38 through fig 13  
45 through 48

2. Retain this sheet in front of manual for reference purposes.

By Order of the Secretary of the Army:

Official:

MILMN H. HAMILTON  
*Administrative Assistant to the  
Secretary of the Army*

GORDON R. SULLIVAN  
*General, United States Army  
Chief of Staff*

DISTRIBUTION:

To be distributed in accordance with DA Form 12-25-E, block no. 1451, requirements for  
TM 5-4110-231-24P.

CHANGE

NO. 6

HEADQUARTERS,  
DEPARTMENT OF THE ARMY  
WASHINGTON, D.C., 12 June 1991

Organizational, Direct and General Support Maintenance  
Repair Parts and Special Tools List  
(Including Depot Maintenance Repair Parts and Special Tools)  
for  
REFRIGERATION UNIT, ELECTRIC MOTOR DRIVEN  
9,000 BTU, MODEL CH609-31, NSN 4110-01-014-4646

Approved for public release; distribution is unlimited

TM 5-4110-231-24P, 6 July 1979, is changed as follows:

1. Remove and insert pages as indicated below. New or changed text material is indicated by a vertical bar in the margin. An illustration change is indicated by a miniature pointing hand.

Remove pages

9 and 10  
34 through 36  
39 and 40  
43 through 48

Insert pages

9 and 10  
34 through 36  
39 and 40  
43 through 48

2. Retain this sheet in front of manual for reference purposes.

**By Order of the Secretary of the Army:**

CARL E. VUONO  
*General, United States Army*  
*Chief of Staff*

**Official:**

**THOMAS F. SIKORA**  
*Brigadier General, United States Army*  
*The Adjutant General*

**DISTRIBUTION:**

To be distributed in accordance with DA Form 12-25E, (qty rqr block no. 1451).

CHANGE

No. 5



HEADQUARTERS  
DEPARTMENT OF THE ARMY  
WASHINGTON, D.C., 9 January 1989

Organizational, Direct and General Support Maintenance  
Repair Parts and Special Tools List  
(Including Depot Maintenance Repair Parts and Special Tools)  
for  
REFRIGERATION UNIT, ELECTRIC MOTOR DRIVEN  
9,000 BTU, MODEL CH609-31, NSN 4110-01-014-4646

TM 5-4110-231-24P, 6 July 1979, is changed as follows:

1. Remove and insert pages as indicated below. New or changed text material is indicated by a vertical bar in the margin. An illustration change is indicated by a miniature pointing hand.

Remove pages	Insert pages
31 and 32	31 and 32
32.1 and 32.2	32.1 and 32.2
35 and 36	35 and 36
45 through 48	45 through 48

2. Retain this sheet in front of manual for reference purposes.

By Order of the Secretary of the Army:

**WILLIAM J. MEEHAN, II**  
*Brigadier General, United States Army*  
*The Adjutant General*

**CARL E. VUONO**  
*General, United States Army*  
*Chief of Staff*

DISTRIBUTION:

To be distributed in accordance with DA Form 12-25A, Unit, Direct Support and General Support Maintenance requirements for Refrigeration Unit, Electric Motor Driven, 9000 BTU Model CH609-31.

CHANGE }  
 No. 4 }

HEADQUARTERS  
 DEPARTMENT OF THE ARMY  
 WASHINGTON, D.C., 21 October 1987

Organizational, Direct and General Support Maintenance  
 Repair Parts and Special Tools List  
 (Including Depot Maintenance Repair Parts and Special Tools)  
 for

REFRIGERATION UNIT, ELECTRIC MOTOR DRIVEN  
 9,000 BTU, MODEL CH609-31, NSN 4110-01-014-4646

TM 5-4110-231-24P, 6 July 1979, is changed as follows:

1. Remove and insert pages as indicated below. New or changed text material is indicated by a vertical bar in the margin. An illustration change is indicated *by* a miniature pointing hand.

Remove pages	Insert pages
9 and 10	9 and 10
35 and 36	35 and 36
45 through 48	45 through 48

2. Retain this sheet in front of manual for reference purposes.

By Order of the Secretary of the Army:

OFFICIAL  
 R. L. DILWORTH  
 Brigadier General, United States Army  
 The Adjutant General

CARL E. VUONO  
 General, United States Army  
 Chief of Staff

DISTRIBUTION:

To be distributed in accordance with DA Form 12-25A, Unit, Direct Support and General Support Maintenance requirements for Refrigeration Unit, Electric Motor Driven, 9000 BTU Model CH609-31.

CHANGE }  
 No. 3 }

HEADQUARTERS  
 DEPARTMENT OF THE ARMY  
 WASHINGTON, D.C., 29 May 1987

Organizational, Direct and General Support Maintenance  
 Repair Parts and Special Tools List  
 (Including Depot Maintenance Repair Parts and Special Tools)  
 for

REFRIGERATION UNIT, ELECTRIC MOTOR DRIVEN  
 9,000 BTU, MODEL CH609-31, NSN 4110-01-014-4646

TM 5-4110-231-24P, 6 July 1979, is changed as follows:

1. Remove and insert pages as indicated below. New or changed text material is indicated by a vertical bar in the margin. An illustration change is indicated by a miniature pointing hand.

Remove pages  
 15 through 18  
 35 and 36  
 43 through 46

Insert pages  
 15 through 18  
 35 and 36  
 43 through 46

2. Retain this sheet in front of manual for reference purposes.

By Order of the Secretary of the Army:

Official:

**R. L. DILWORTH**  
*Brigadier General, United States Army*  
*The Adjutant General*

**JOHN A. WICKHAM, JR.**  
*General, United States Army*  
*Chief of Staff*

**DISTRIBUTION:**

To be distributed in accordance with DA Form 12-25A, Unit, Direct Support and General Support Maintenance requirements for Refrigeration Unit, Electric Motor Driven, 9000 BTU Model CH609-31.

CHANGE }  
NO. 2 }

HEADQUARTERS  
DEPARTMENT OF THE ARMY  
WASHINGTON, D.C., 30 December 1986

Organizational, Direct and General  
Support Maintenance Repair  
Parts and Special Tools List  
(Including Depot Maintenance Repair  
Parts and Special Tools)  
For  
REFRIGERATION UNIT, ELECTRIC MOTOR DRIVEN  
9,000 BTU  
MODEL CH609-31  
NSN 4110-01-014-4646

TM 5-4110-231-24P, 6 July 1979, is changed as follows:

1. Remove and insert pages as indicated below. New or changed text material is indicated by a vertical bar in the margin. An illustration change is indicated by a miniature pointing hand.

Remove pages	Insert pages
7 through 10	7 through 10
17 and 18	17 and 18
23 and 24	23 and 24
27 and 28	27 and 28
35 and 36	35 and 36

2. Retain this sheet in front of manual for reference purposes.

**By Order of the Secretary of the Army:**

**JOHN A. WICKHAM, JR.**  
*General, United States Army*  
*Chief of Staff*

**R. L. DILWORTH**  
*Brigadier General, United States Army*  
*The Adjutant General*

**DISTRIBUTION:**

To be distributed in accordance with DA Form 12-25A, Organizational, Direct and General Support Maintenance requirements for Refrigeration Unit, Electric Motor Driven, 90000 BTU Model CH609-31

CHANGE }  
 No. 1 }

HEADQUARTERS  
 DEPARTMENT OF THE ARMY  
 WASHINGTON, D.C., 1 April 1986

Organizational, Direct and General Support  
 Maintenance Repair Parts and Special Tools List  
 (Including Depot Maintenance Repair Parts  
 and Special Tools)  
 For  
 REFRIGERATION UNIT, ELECTRIC MOTOR DRIVEN  
 9,000 BTU  
 MODEL CH609-31  
 NSN 4110-01-014-4646

TM 5-4110-231-24P, 6 July 1979, is changed as follows:

1. Remove and insert pages as indicated below. New or changed text material is indicated by a vertical bar in the margin. An illustration change is indicated by a miniature pointing hand.

Remove pages	Insert pages
i/ii	i/ii
9 and 10	9 and 10
17 through 20	17 through 20
31 and 32	31 and 32
---	32.1 through 32.3/32.4
34 through 36	34 through 36
47	47 and 48

2. Retain this sheet in front of manual for reference purposes.

**By Order of the Secretary of the Army:**

**Official:**

**R. L. DILWORTH**  
*Brigadier General, United States Army*  
*The Adjutant General*

**JOHN A. WICKHAM, JR.**  
*General, United States Army*  
*Chief of Staff*

**DISTRIBUTION:**

To be distributed in accordance with DA Form 12-25A, Organizational, Direct and General Support Maintenance requirements for Refrigeration Unit, Electric Motor Driven, 9000 BTU Model CH609-31.



**ORGANIZATIONAL, DIRECT AND GENERAL  
 SUPPORT MAINTENANCE REPAIR  
 PARTS AND SPECIAL TOOLS LIST  
 (INCLUDING DEPOT MAINTENANCE REPAIR  
 PARTS AND SPECIAL TOOLS)**

**FOR  
 REFRIGERATION UNIT, ELECTRIC MOTOR DRIVEN  
 9,000 BTU  
 MODEL CH609-31  
 NSN 4110-01-014-4646**

**REPORTING ERRORS AND RECOMMENDING IMPROVEMENTS**

You can help improve this manual. If you find any mistake or if you know of a way to improve the procedures, please let us know. Mail your letter, DA Form 2028 (Recommended Changes to Publications and Blank Forms), or DA Form 2028-2 located in the back of this manual direct to: Commander, U.S. Army Troop Support Command, ATTN: AMSTR-MCTS, 4300 Goodfellow Boulevard, St. Louis, MO 63120-1798. A reply will be furnished directly to you.

**Table of Contents**

		Listing Page	Illus Figure
Section I.	INTRODUCTION .....	1	
Section II.	REPAIR PARTS LIST.....	7	
Group 01	Cabinet, Doors, Panels, Base, and Plates .....	7	1
Group 02	Control Panel and Wiring Harness .....	9	2
Group 03	Gages, Mounting and Controls.....	13	3
Group 04	Blower Assembly and Controls.....	15	4
Group 05	Refrigerant Piping and Valves .....	17	5, 6
Group 06	Evaporator Coil and Attaching Parts.....	23	7, 8
Group 07	Condenser Coil and Attaching Parts .....	29	9
Group 08	Compressor Assembly .....	31	10
	Compressor, Belt Driven .....	32.1	10A
Group 09	Electric Motors and Controls .....	35	11, 12
Group 10	Bulk Items List .....		13
Section III.	SPECIAL TOOLS LIST (Not Applicable)		
Section IV.	NATIONAL STOCK NUMBER AND PART NUMBER INDEX	43	

REPAIR PARTS AND SPECIAL TOOLS LIST

SECTION I. INTRODUCTION

1. Scope.

This manual lists spares and repair parts; special tools; special test, measurement, and diagnostic equipment (TDE), and other special support equipment required for performance of organizational direct support and general support maintenance of the Refrigeration Unit. It authorizes the requisitioning and issue of spares and repair parts as indicated by the source and maintenance codes.

2. General.

This Repair Parts and Special Tools List is divided into the following sections:

**a. Section II - Repair Parts List.** A list of spares and repair parts authorized for use in the performance of maintenance. The list also includes parts which must be removed for replacement of the authorized parts. Parts lists are composed of functional groups in ascending numeric sequence, with the parts in each group listed in figure and item number sequence. Bulk materials are listed in NSN sequence.

**b. Section III - Special Tools List.** A list of special tools, special TMDE, and other special support equipment authorized for the performance of maintenance.

**c. Section IV - National Stock Number and Reference Number Index.** A list, in National Item Identification Number (NIIN) sequence of all National Stock Numbers (NSNO) appearing in the listings, followed by a list in alphameric sequence of all part numbers are cross-referenced to each illustration figure and item number appearance. This index is followed by a cross-reference list of reference designators to figure and item numbers.

3. Explanation of Columns.

**a. Illustration.** This column is divided as follows:

(1) **Figure Number.** Indicates the figure number of the illustration in which the item is shown.

(2) **Item Number.** The number used to identify item called out in the illustration.

**b. Source, Maintenance, and Recoverability (SMR) Codes.**

(1) **Source Code.** Source codes indicate the manner of acquiring support items for maintenance, repair, or overhaul of end items. Source codes are entered in the first and second positions of the Uniform SMR Code format as follows:

Code	Definition
PA	Item procured and stocked for anticipated or known usage.
PB	Item procured and stock for insurance purposes because essentially dictates that a minimum quantity be available in the supply system.
PC	Item procured and stocked and which otherwise would be coded PA except that it is deteriorate in nature.
PD	Support item, excluding support equipment, procured for initial issue or outfitting and stocked only for subsequent or additional initial issues or out fittings. Not subject to automatic replenishment.
PE	Support equipment procured and stocked for initial issue or outfitting to specified maintenance repair activities.

Code	Definition
PF	Support equipment which will not be stocked but which will be centrally procured on demand.
PG	Item procured and stocked to provide for sustained support for the life of the equipment. It is applied to an item peculiar to the equipment which, because of probable discontinuance or shutdown of production facilities, would prove uneconomical to reproduce at a later time.
KD	An item of a depot overhaul/repair kit and not purchased separately. Depot kit defined as a kit that provides items required at the time of overhaul or repair.
KF	An item of a maintenance kit and not purchased separately. Maintenance kit defined as a kit that provides an item that can be replaced at organizational or intermediate levels of maintenance.
KB	Item included in both a depot overhaul/repair kit and a maintenance kit.
MO	Item to be manufactured or fabricated at organizational level.
MF	Item to be manufactured or fabricated at the direct support maintenance level.
MH	Item to be manufactured or fabricated at the general support maintenance level.
MD	Item to be manufactured or fabricated at the depot support maintenance level.
AO	Item to be assembled at organizational level.
AF	Item to be assembled at direct support maintenance level.
AH	Item to be assembled at general support maintenance level.

Code	Definition
AD	Item to be assembled at depot maintenance level.
XA	Item is not procured or stocked because the requirements for the item will result in the replacement of the next higher assembly.
XB	Item is not procured or stocked. If not available through salvage, requisition.
XC	Installation drawing, diagram instruction sheet, field service drawing, that is identified by manufacturer's part number.
XD	A support item that is not stocked. When required, item will be procured through normal supply channels.

**NOTE**

***Cannibalization or salvage may be used as a source of supply for any items sourced coded above except those coded XA and aircraft support items as restricted by AR 700-41.***

(2) *Maintenance Code.* Maintenance codes are assigned to indicate the levels of maintenance authorized to USE and REPAIR support items. The maintenance codes are entered in the third and fourth positions of the Uniform SMR Code format as follows:

(a) The maintenance code entered in the third position will indicate the lowest maintenance level authorized to remove, replace, and use the support item. The maintenance code entered in the third position will indicate one of the following levels of maintenance:

Code	Definition
C	Crew or operator maintenance performed within organizational maintenance.
0	Support item is removed, replaced, used at the organizational level.

Code	Definition
F	Support item is removed, replaced, used at the direct support level.
H	Support item is removed, replaced, used at the general support level.
D	Support items that are removed, replaced, used at depot, mobile depot, specialized repair activity only.

(b) The maintenance code entered in the fourth position indicates whether the item is to be repaired and identifies the lowest maintenance level with the capability to perform complete repair (i.e., all authorized maintenance functions). This position will contain one of the following maintenance codes:

Code	Application/Explanation
O	The lowest maintenance level capable of complete repair of the support item is the organizational level.
F	The lowest maintenance level capable of complete repair of the support item is the direct support level.
H	The lowest maintenance level capable of complete repair of the support item is the general support level.
D	The lowest maintenance level capable of complete repair of the support item is the depot level.
L	Repair restricted to designated Specialized Repair Activity.
Z	Nonreparable. No repair is authorized.
B	No repair is authorized. The item may be reconditioned by adjusting, lubricating, etc., at the user level. No parts or special tools are procured for the maintenance of this item.

**(3) Recoverability Code. Recoverability**  
 codes are assigned to support items to indicate the disposition action on unserviceable items. The recoverability code is entered in the fifth position of the Uniform SMR Code format as follows:

Recoverability	
Codes	Definition
Z	Nonreparable item. When unserviceable, condemn and dispose at the level indicated in position 3.
O	Reparable item. When uneconomically repairable, condemn and dispose at organization level.
F	Reparable item. When uneconomically repairable, condemn and dispose at the direct support level.
H	Reparable item. When uneconomically repairable, condemn and dispose at the general support level.
D	Reparable item. When beyond lower level repair capability, return to depot. Condemnation and disposal not authorized below depot level.
L	Reparable item. Repair, condemnation, and disposal not authorized below depot/ specialized repair activity level.
A	Items requires special handling or condemnation procedures because of specific reasons (i.e., precious metal content, high dollar value, critical material or hazardous material). Refer to appropriate manuals/directives for specific instructions.

**c. National Stock Number.** Indicates the National Stock Number assigned to the item and will be used for requisitioning purposes.

**d. Part Number.** Indicates the primary number used by the manufacturer which controls the design and characteristics of the item by means of its engineering drawings, specifications standards, and inspection requirements to identify an item or range of items.

**NOTE**  
*When a stock numbered item is requisitioned, the repair part received may have a different part number than the part being replaced.*

e. *Federal Supply Code for Manufacturer (FSCM)*. The FSCM is a 5-digit numeric code listed in SB 708-42 which is used to identify the manufacturer, distributor, or Government agency, etc.

f. *Description*. Indicates the Federal item name and, if required, a minimum description to identify the item. Items that are included in kits and sets are listed below the name of the kit or set, with the quantity of each item in the kit or set indicated in the quantity in incorporated in unit column. When the part to be used differs between serial numbers of the same model, the effective serial numbers are shown as the last line of the description. In the Special Tools List, the initial basis of issue (BOI) appears as the last line in the entry for each special tool, special TMDE, and other special support equipment. When density of equipments supported exceeds density spread indicated in the basis of issue, the total authorization is increased accordingly.

g. *Unit of Measure (U/M)*. Indicates the standard of the basic quantity of the listed item as used in performing the actual maintenance function. This measure is expressed by a two-character alphabetical abbreviation (e.g., ea, in, pr, etc). When the unit of measure differs from the unit of issue, the lowest unit of issue that will satisfy the required units of measure will be requisitioned.

h. *Quantity Incorporated in Unit*. Indicates the quantity of the item used in the breakout shown on the illustration figure, which is prepared for a functional group, subfunctional group, or an assembly. A "V" appearing in this column in lieu of a quantity indicates that no specific quantity is applicable (e.g., shims, spacers, etc.).

4. *Special Information*.

a. Detailed manufacturing instructions for items source coded to be manufactured or fabricated are found in TM 5-4110-231-14. Bulk materials required to manufacture items are listed in the Bulk Material Group of this manual.

b. Detailed assembly instructions for items source coded to be assembled are found in TM 5-4110-231-14. Assembly components are listed immediately following the item to be assembled.

5. *How to Locate Repair Parts*.

a. When National Stock Number or Part Number is Unknown:

(1) *First*. Using the Table of Contents, determine the functional group within which the repair part belongs. This is necessary since illustrations

are prepared for functional groups, and listings are divided into the same groups.

(2) *Second*. Find the illustration covering the functional group to which the repair part belongs.

(3) *Third*. Identify the repair part on the illustration and note the illustration figure and item number of the repair part.

(4) *Fourth* Using the Repair Parts Listing, find the figure and item number noted on the illustration.

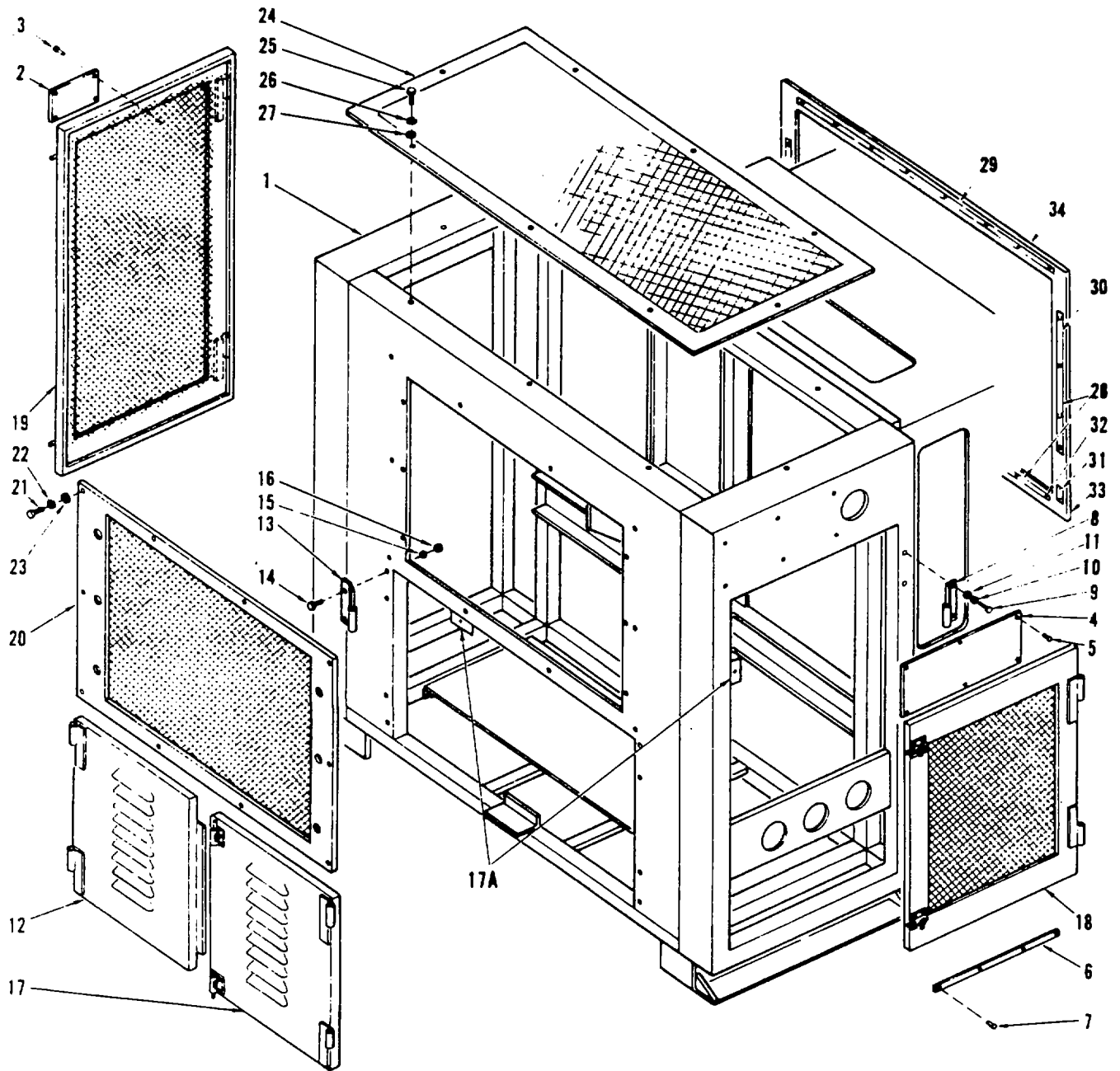
b. When National Stock Number or Part Number is Known.

(1) *First*. Using the Index of National Stock Numbers and Part Numbers, find the pertinent national stock number or part number. This index is in NIIN sequence followed by a list of part numbers in ascending alphanumeric sequence, cross-referenced to the illustration figure number and item number.

(2) *Second* After finding the figure and item number, locate the figure and item number in the repair parts list.

6. Abbreviations.

Abbreviations	Explanation
AC	Alternating Current
ASSY	Assembly
CONT	Control
CYL	Cylinder
EA	Each
ELECT	Electrical
EVAP	Evaporator
FT	Feet/Foot
HEX	Hexagon
IDENT	Identification
INSTRUCT	Instructions
L	Left
LH	Left Hand
OSE	Opposite Shaft End
PLT	Plate
PRES	Pressure
QD	Quick Disconnect
R	Right
REF	Reference
REFRIG	Refrigeration
RH	Right Hand
SE	Shaft End
TB	Tube
TEMP	Temperature



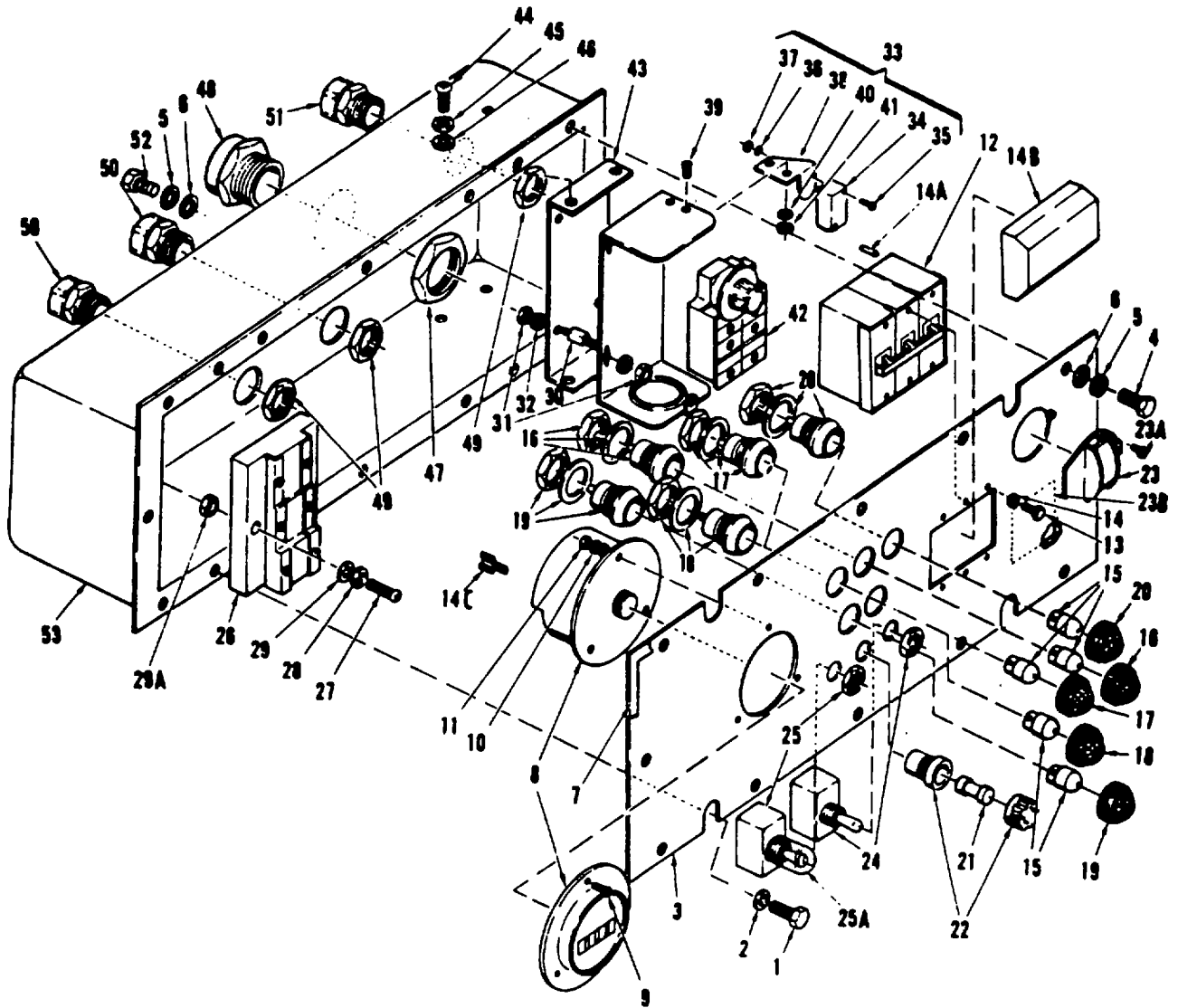
4110-231-24P/1

Figure 1. Frame Assembly, Doors, Panels, and Data Plates

SECTION II. - RPAIR PARTS LIST

(1) ILLUSTRATION		(2)	(3)	(4)	(5)	(6)	(7)	(8)
(a) FIG NO.	(b) ITEM NO.	SMR CODE	FEDERAL STOCK NUMBER	PART NUMBER	FSCM	DESCRIPTION  USABLE ON CODE	U/M	QTY INC IN UNIT
			GROUP 01 CABINET,	DOORS, PANELS,	BASE AND			
1	1	XAFZZ		AC208-01	90598	FRAEM .....	EA	1
1	2	XBOZZ		605518	90598	PLATE, IDENT .....	EA	1
1	3	PAOZZ	5320-00-956-4C67	AD42ABS	07707	RIVET .....	EA	4
1	4	XBOZZ		605511	90598	FLATE, INSTRUCT .....	EA	1
1	5	PAOZZ	5320-00-956-4C67	AD42ABS	07707	RIVET .....	EA	6
1	6	XBOZZ		30008	90598	PLATE, INSTRUCT .....	EA	1
1	7	PAOZZ	5320-00-956-4C67	AD42ABS	07707	RIVET .....	EA	4
1	8	PFOZZ		605499-01	90598	HINGE LH, .....	EA	4
1	8	PAOZZ	5340-01-054-0C68	MS35829-110	96906	HINGE .....	EA	1
1	9	PAOZZ	5305-00-068-0506	MS90726-6	96906	SCREW, CAP, HEX .....	EA	8
1	10	PAOZZ	5310-00-809-4056	MS27183-10	96906	WASHER, FLAT .....	EA	4
1	12	XBOZZ		AC220-01	90598	DOOR, FRONT LM .....	EA	1
1	13	MFOZZ		6C5499-02	90589	HINGE, RM .....	EA	4
1	2	PAOZZ	5340-01-054-0C68	MS35829-110	96906	HINGE .....	EA	1
1	14	PAOZZ	5305-00-068-0508	MS90726-6	96906	SCREW, CAP, HEX .....	EA	8
1	15	PAOZZ	5310-00-809-4058	MS27183-10	96906	WASHER, FLAT .....	EA	8
1	16	PAOZZ	5310-00-959-7600	MS51922-5	96906	NUT, SELF-LOCK .....	EA	8
1	17	XBOZZ		AC220-02	90598	DOOR, FRONT, RM. ....	EA	1
1	17A	XBOZZ		R1 0470 ¼ X ¾	71343	GASKET .....	EA	V
1	18	XBOZZ		30005	90598	DOOR, SIDE RM. ....	EA	1
1	19	XBOZZ		30006	90598	DOOR, SIDE, LM .....	EA	1
1	20	XBOZZ		AC225-01	90598	SCREEN, COND .....	EA	1
1	21	PAOZZ	5305-00-068-0505	MS90726-5	96906	SCREEN, CAP, HEX .....	EA	10
1	22	PAOZZ	5310-00-582-5965	MS35338-44	96906	WASHER, LOCK .....	EA	10
1	23	PAOZZ	5310-00-809-4056	MS27183-10	96906	WASHER, FLAT .....	EA	10
1	24	XBOZZ		30032	90598	GRILL, TOP .....	EA	1
1	25	PAOZZ	5305-00-068-0505	MS90726-5	96906	SCREW, CAP, HEX .....	EA	8
1	26	PAOZZ	5310-00-582-5965	MS35338-44	96906	WASHER, LOCK .....	EA	8
1	27	PAOZZ	5310-00-809-4056	MS27103-10	96906	WASHER, FLAT .....	EA	8
1	28	XBOZZ		30022-1	90598	RETAINER, M STRIP .....	EA	1
1	29	XBOZZ		30022-2	90598	RETAINER, STRIP .....	EA	1
1	30	XBOZZ		30023	90598	RETAINER, STRIP .....	EA	2
1	31	XBOZZ		30024	90598	RETAINER, STRIP .....	EA	2
1	32	PAOZZ	5935-00-879-7941	MS24617-31	96906	SCREW, HEX .....	EA	31
1	33	PAOZZ		30033-2	90598	GASKET, LEFT .....	EA	2
1	34	PAOZZ		30033-1	90598	GASKET, RIGHT .....	EA	2

Change 2 7



4110-231-24P/2

Figure 2. Control Panel



SECTION II

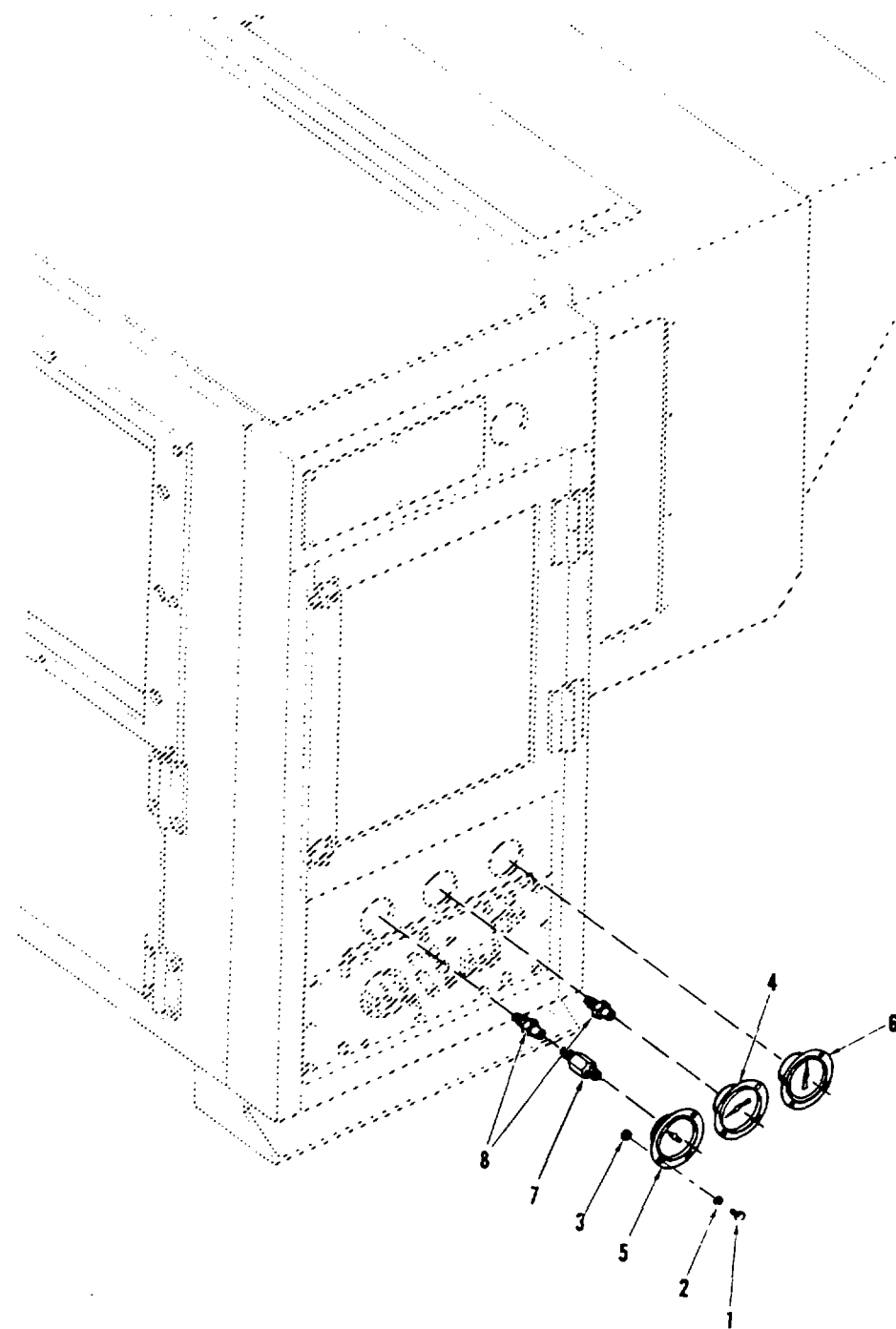
(1) ILLUSTRATION		(2)	(3)	(4)	(5)	(6)	(7)	(8)
(a) FIG NO.	(b) ITEM NO.	SMR CODE	NATIONAL STOCK NUMBER	PART NUMBER	FSCM	DESCRIPTION  USABLE ON CODE	U/M	QTY INC IN UNIT
						GROUP 02		
2		XBOZZ		A0206-01	90598	CONTROL PANEL.....	EA	1
2	1	PAOZZ	5305-00-068-0504	MS90726-3	96906	SCREW, CAP, HEX.....	EA	4
2	2	PAOZZ	5310-00-582-5965	MS35338-44	96906	WASHER, LOCK.....	EA	4
2	3	XBOZZ		A0230	90598	PANEL.....	EA	1
2	4	PAOZZ	5305-00-068-0506	MS90726-6	96906	SCREW CAP, HEX.....	EA	12
2	5	PAOZZ	5310-00-582-5965	MS35338-44	96906	WASHER, LOCK.....	EA	12
2	6	PAOZZ	5310-00-809-4058	MS27183-10	96906	WASHER, FLAT.....	EA	12
2	7	PAOZZ	5330-01-029-6301	R411N125THK	82942	GASKET.....	EA	1
2	8	PBOZZ		56181-00	16476	METER, TIME TOTALIZE.....	EA	1
2	9	PAOZZ	5305-00-889-3000	MS35206-230	96906	SCREW, MACHINE.....	EA	1
2	10	PAOZZ	5310-00-983-8483	MS27183-5	96906	WASHER, FLAT.....	EA	3
2	11	PAOZZ	5310-00-081-8087	MS21044N06	96906	NUT, SELF-LOCK.....	EA	3
2	12	PAOZZ		13MC4-104-40	82647	CIRCUIT BREAKER.....	EA	1
2	13	PAOZZ	5305-00-984-4984	MS35206-227	96906	SCREW, MACHINE.....	EA	6
2	14	PAOZZ	5310-00-167-0721	MS35333-41	96906	WASHER, LOCK.....	EA	6
2	14A	PAOZZ		166VB6156	11897	SLEEVE, COVER.....	EA	6
2	14B	PAOZZ	5925-00-979-5856	HE1050	19133	COVER, CIRCUIT BREAKER.....	EA	1
2	14C	XBOZZ		PTA250	59730	ADAPTER, ELECT.....	EA	5
2	15	PAOZZ	5240-00-155-8707	1819	72619	LAMP, INCANDESCENT.....	EA	5
2	16	XBOZZ		85-5710-0841-20372619	90598	LIGHT, INDICATOR.....	EA	1
2	17	XBOZZ		85-5710-0842-20372619	90598	LIGHT, INDICATOR.....	EA	1
2	18	XBOZZ		85-5710-0843-20372619	90598	LIGHT, INDICATOR.....	EA	1
2	19	XBOZZ		85-5710-0844-20372619	90598	LIGHT, INDICATOR.....	EA	1
2	20	XBOZZ		85-5710-0845-20372619	90598	LIGHT, INDICATOR.....	EA	1
2	21	PAOZZ	5920-00-011-7142	F02A125V10A	81349	FUSE.....	EA	1
2	22	XBOZZ		HKP-HH	71400	FUSEHOLDER.....	EA	1
2	23	XBOZZ		AC206-22	90598	COVER, THERMO.....	EA	1
2	23A	PAOZZ	5320-00-469-4137	SD34BS	07707	RIVET.....	EA	2
2	23B	PAOZZ		AC206-25	90598	INSULATOR.....	EA	1
2	24	PAOZZ		8801K17	27191	SWITCH, TOGGLE.....	EA	1
2	25	PAOZZ	5930-00-655-1514	MS35058-22	96906	SWITCH, TOGGLE.....	EA	1
2	25A	PAOZZ	5930-00-644-0110	N1030	97539	BOOT, SWITCH.....	EA	2
2	26	PBOZZ		425XBX148-24AC78290	90598	CONTACTOR.....	EA	1
2	27	PAOZZ	5305-00-993-1848	MS35207-265	96906	SCREW, MACHINE.....	EA	2
2	28	PAOZZ	5310-00-045-3296	MS35338-43	96906	WASHER, LOCK.....	EA	2
2	29	PAOZZ	5310-00-809-8546	MS27183-8	96906	WASHER, FLAT.....	EA	2
2	29A	PAOZZ	5310-00-877-5797	MS21044N3	96906	NUT, SELF-LOCK.....	EA	2
2	30	PAOZZ	5340-00-200-4114	321A	61463	MOUNT, RESILIENT.....	EA	2

Change 7 9

## SECTION II

TM 5-4110-231-24P

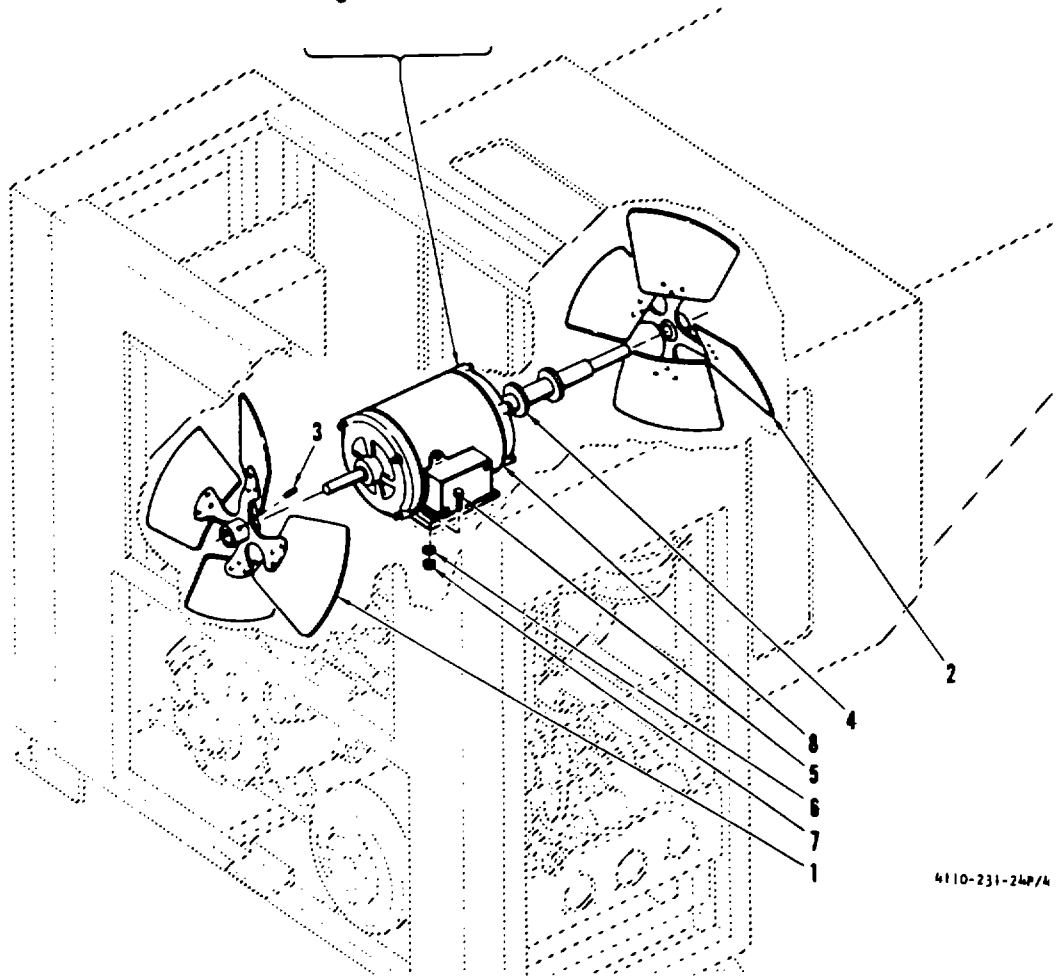
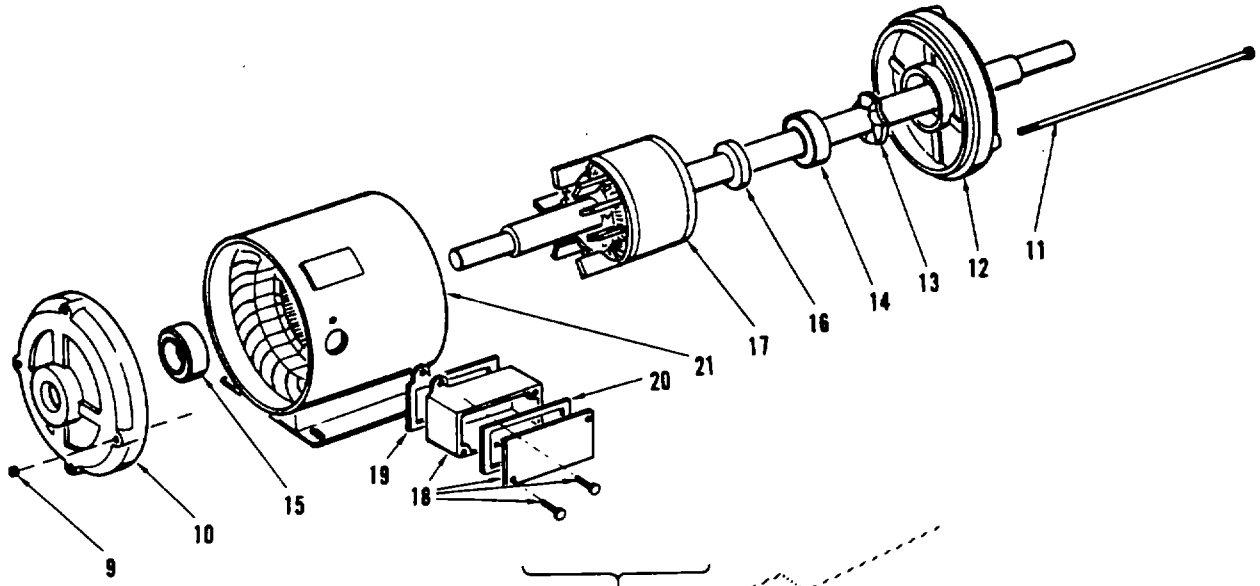
(1) ILLUSTRATION		(2)	(3)	(4)	(5)	(6) DESCRIPTION	(7)	(8)
(a) FIG NO.	(b) ITEM NO.	SMR CODE	NATIONAL STOCK NUMBER	PART NUMBER	FSCM	USABLE ON CODE	U/M	QTY INC IN UNIT
2	31	PAOZZ	5310-00-811-3494	MS21044N08	96906	NUT.SELF LOCK .....	EA	4
2	32	PAOZZ	5310-00-809-8544	MS27183-7	96906	WASHER.FLAT.....	EA	4
2	33	PAOZZ		30009	90598	THERMOSTAT ASSY .....	EA	1
2	34	PAOZZ	5930-00-126-5840	V3L13108	91929	SWITCH SENSITIVE .....	EA	1
2	35	PAOZZ	5305-00-83-6730	MS35206-218	96906	SCREW.MACHINE .....	EA	2
2	36	PAOZZ	5310-00-193-7577	MS35333-36	96906	WASHER.LOCK.....	EA	2
2	37	PAOZZ	5310-00-434-9739	MS35649-242	96906	NUT.PLAIN.HEX .....	EA	2
2	38	XBOZZ		30007	90598	BRACKET,SWITCH .....	EA	1
2	39	PAOZZ	5305-00-889-2997	MS35206-215	96906	SCREW,MACHINE .....	EA	2
2	40	PAOZZ	5310-00-193-7577	MS35333-36	96906	WASHER.LOCK.....	EA	2
2	41	PAOZZ	5310-00-934-9739	MS35649-242	96906	NUT,PLAIN.HEX .....	EA	2
2	42	PAOZZ		A28AJ29	50831	_SWITCH.THERMOST .....	EA	1
2	43	XBOZZ		AC229	90598	BRACKET SWITCH .....	EA	1
2	44	PAOZZ	5305-00-89-7434	MS35207-263	96906	SCREW.MACHINE .....	EA	4
2	45	PAOZZ	5310-00-045-3296	MS35338-43	96906	WASHER,LOCK.....	EA	4
2	46	PAOZZ	5310-00-809-546	MS2718i-8	96906	WASHER.FLAT.....	EA	2
2	47	PAOZZ	5975-00-714-8031	143	59730	LOCKNUT.ELECTRICAL .....	EA	1
2	48	OXBOZZ	CG62100	03743		CONNECTOR,CABLE .....	EA	1
2	49	PAOZ	5975-00-152-1075	141	59730	LOCKNUT .....	EA	3
2	50	PAOZZ	5975-00-296-1669	2521	59730	BUSHING,STR,REL.....	EA	2
2	51	PAOZZ	5975-00-945-0142	2520	59730	BOX CONNECTOR.ELECT .....	EA	2
2	52	PAOZZ	5305-00-993-2463	MS35207-279	96906	SCREW.MACHINE .....	EA	1
2	53	XOBOZZ	AC228	90588		BOXCONTROL.....	EA	1
2		PAOZZ		RC2227	59730	TERMINAL.LUG.....	EA	3
2		PAOZZ		RB2217	59730	TERMINAL,LUG.....	EA	21
2		PAOZZ		RB2237	59730	TERMINAL.LUG.....	EA	40
2		PAOZZ	5940-00-073-6683	RB250	59730	TERMINAL O.D.....	EA	24
2		PAOZZ	5940-0032-5190	RBB21	59730	SPLICE CONDUCTOR .....	EA	8
2		PAOZZ		RB187	59730	TERMINAL.D.....	EA	2
2		PAOZZ	5940-0030-0515	R8713	59730	TERMINALLUG.....	EA	8



4110-231-24P/3

Figure 3. Discharge, Suction, and Temperature Gages

(1) ILLUSTRATION		(2)	(3)	(4)	(5)	(6)	(7)	(8)
(a) FIG NO.	(b) ITEM NO.	SMR CODE	FEDERAL STOCK NUMBER	PART NUMBER	FSCM	DESCRIPTION  USABLE ON CODE	U/M	QTY INC IN UNIT
3	1	PAFZZ	5335-00-889-3000	MS35206-230	96906	GROUP 03 GAUGES, MOUNTING AND CONTROLS		
3	2	PAFZZ	5310-00-045-4007	MS35338-41	96906	SCEW,MACHINE .....	EA	9
3	3	PAFZZ	5310-00-934-9717	MS35649-262	96936	WASHER,LOCK .....	EA	9
3	4	PAFZZ	6685-00-924-9434	MS27900-1P	96906	NUT,PLAIN,HEX .....	EA	9
3	5	PAFZZ	6685-00-948-0928	MS27900-1C	96906	GAGE,DISCHARGE .....	EA	11
3	6	PAFZZ	6685-00-987-5600	MS27211-2	96906	GAGE, SUCTION .....	EA	1
3	7	PAFZZ	4313-00-061-9189	A13742	41947	GAGE,TEMP .....	EA	1
3	8	PAOZZ	4730-00-090-0832	46X4	79470	DAMPENER, FLUID .....	EA	1
						CONNECTOR, PIPE.....	EA	2
					<b>13</b>			



4110-231-24P/4

Figure 4. Fans and Fan Motor

(1) ILLUSTRATION		(2)	(3)	(4)	(5)	(6)	(7)	(8)
(a) FIG NO.	(b) ITEM NO.	SMR CODE	FEDERAL STOCK NUMBER	PART NUMBER	FSCM	DESCRIPTION  USABLE ON CODE	U/M	QTY INC IN UNIT
						GROUP 04 BLOWER ASSEMBLY AND CONTROLS		
4	1	XBOZZ		605517	90598	FAN,CONDENSER.....	EA	1
4	2	XBOZZ		604841	90598	FAN,EVAPORATOR.....	EA	1
4	3	XBOZZ		MS51023-125	96906	SETSCREW .....	EA	1
4	2	XBOZZ		P10470X1-4	71643	GASKET .....	FT	V
4	2	XBOZZ		P411N1/8X1/2	86730	GASKET .....	FT	V
4	2	PAOZZ	5640-00-555-3011	PT1	87698	TAPE, INSULATION.....	FT	1
4	4	XBOZZ		605530	90598	WASHER, FELT .....	EA	1
4	5	PAOZZ	5306-00-225-8497	MS9025-32	96906	SCREW,CAP,HEX.....	EA	4
4	5	PAOZZ	5310-00-081-4219	MS27183-12	96906	WASHER, FLAT .....	EA	4
4	7	PAOZZ	5310-00-984-3806	MS51922-9	96906	NUT,SELF-LOCK.....	EA	4
4	8	PAOZZ		604218	92940	MOTOR, AC .....	EA	1
4	9	PAOZZ	5313-00-177-5797	MS21044N3	96906	NUT,SELF-LUCK.....	EA	4
4	10	XBOZZ		07803113-03-10	92940	END 8ELL, LOCK .....	EA	1
4	11	XBOZZ		19A01254-14-00	92940	THRU-BOLT .....	EA	4
4	12	XBOZZ		07803113-03-17	92940	END BELL S.E.....	EA	1
4	13	XBOZZ		22A02292-02-00	92940	SPRING WAVY .....	EA	1
4	14	PAOZZ		044A09101-03-00	92940	BEARING BALL .....	EA	1
4	15	PAOZZ		04A09101-0200	92940	BEARING,BALL.....	EA	1
4	16	XBOZZ		28A05622-03-00	92940	.SPACER .....	EA	1
4	17	XBOZZ		604218ROT	92940	.ROTUR AND SHAFT .....	EA	1
4	18	XBOZZ		09304009-01-00	92940	.CONDUIT BOX.....	EA	1
4	19	XBOZZ		29A08287-01-00	92940	.GASKET .....	EA	1
4	20	XBOZZ		29A08287-01-00	92940	.GASKET .....	EA	1
4	21	XBOZZ		604218STA	92940	.STATOR .....	EA	1
					15			

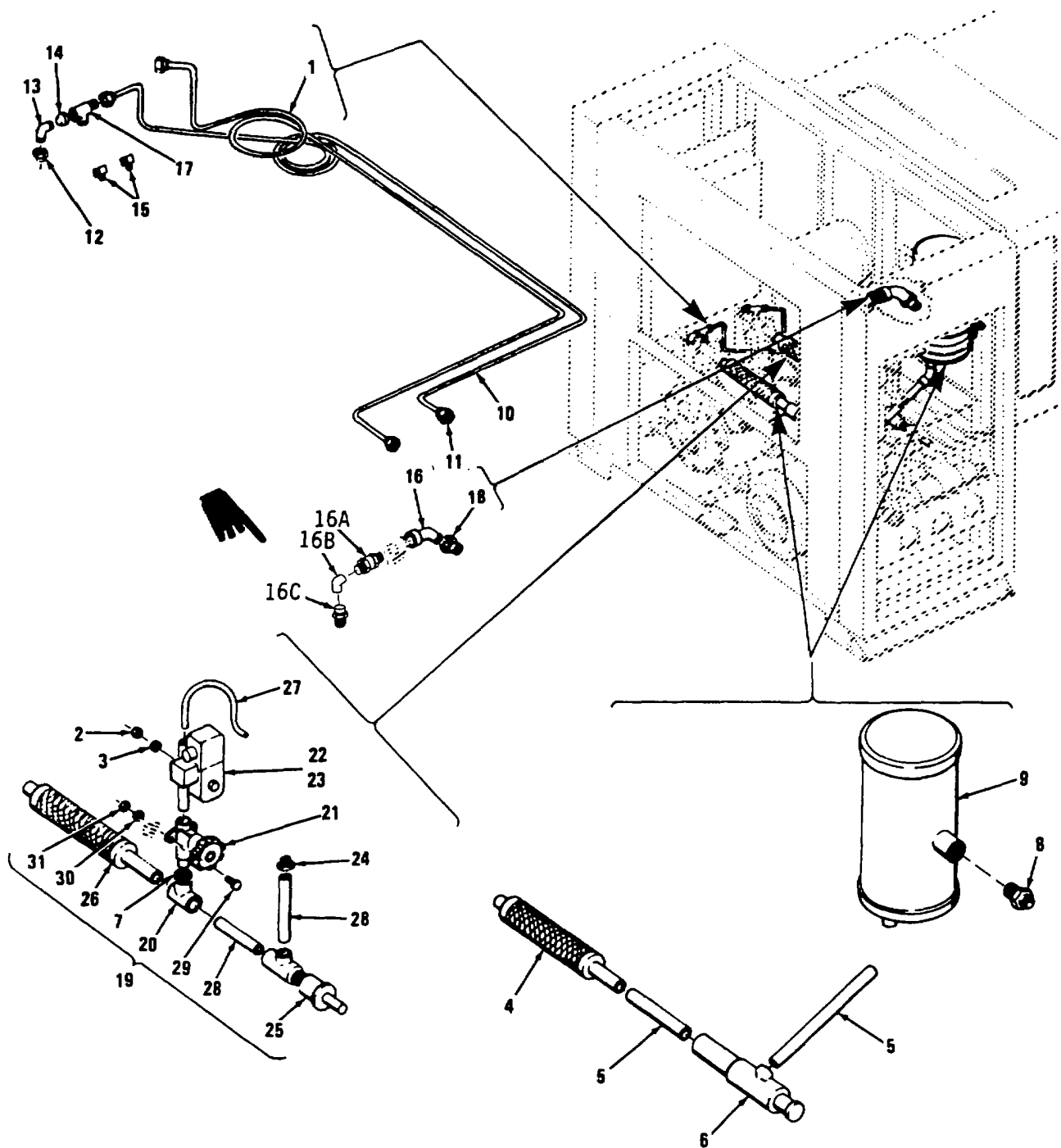


Figure 5. Accumulator Pipe Assembly, Discharge Line Assembly, and Gage Lines

(1) ILLUSTRATION		(2)	(3)	(4)	(5)	(6) DESCRIPTION	(7)	(8)
(a) FIG NO.	(b) ITEM NO.	SMR CODE	FEDERAL STOCK NUMBER	PART NUMBER	FSCM	USABLE ON CODE	U/M	QTY INC IN UNIT
						GROUP 05 REFRIGERATOR PIPING AND VALVES		
5	1	XBFZZ		AC233	90598	TUBE ASSY .....	EA	1
5	2	XBFZZ.		AC237	90598	ACCUMULATOR AS.....	EA	1
5	2	PAOZZ	5310-00-880-7745	MS51968-11	96906	NUT, PLAIN HEX.....	EA	1
5	3	PAOZZ	5313-00-209-0965	MS35338-47	96906	WASHER, LOCK .....	EA	1
5	4	PAFZZ		SL-J9M	96103	HOSF, METTALLIC .....	EA	1
5	5	PAFZZ	4710-00-640-1103	ASTM3208.12500	81346	TUBING COPPER .....	FT	1
5	6	PAFZZ	4820-00-893-9136	MS17866-9	96906	VALVE, PRESS JRE .....	EA	1
5	7	PAFZZ	4730-00-264-9155	M1022	41947	CUUPLING .....	EA	1
5	8	XBFZZ	5340-00-917-3854	FU63212	58553	PLUG,FUSIBLE .....	EA	1
5	9	XBFZZ		604839	90598	ACCUMULAOR .....	EA	1
5	10	XBFZZ		AC243	90598	TUBE ASSY .....	EA	1
5	11	XBFZZ		641SF ¼	30327	NUT, FLARED .....	EA	2
5	12	XBFZZ		64OFB ¼	30327	CAP NUT .....	EA	2
5	13	PAFZZ	4730-00-639-9773	41947	41947	ELBOW TUBE .....	EA	1
5	14	XBFZZ		625F ¼	30327	GASKET FITTING .....	EA	3
5	15	PAFZZ	4730-00-211-5632	49F ¼ X 1/8	30327	ELBOW TUBE .....	EA	1
5	18	PAFZZ	4730-00-720-0116	A2258	41947	ADAPTER TUBE .....	EA	2
5	16	PAFZZ	4730-00-813-3719	W3326	41947	ELBOW, TUBE .....	EA	2
5	16A	PAFZZ	4820-00-246-3954	A15631	41947	VALVE, CHECK.....	EA	1
5	16B	PAFZZ	4730-00-839-6380	W2326	41947	ELBOW, TUBE .....	EA	1
5	16C	PAFZZ	4730-00-720-0116	A2258	41947	COUPLING, TUBE.....	EA	1
5	17	PAFZZ	4730-00-289-4202	MS53871-2-2F	96936	TEE, TUBE .....	EA	2
5	19	PAFZZ		AC236	90598	DISCHARGE LINE ASSY.....	EA	1
5	20	PAFZZ	4730-00-989-1903	W4043	41947	TEE,TUBE .....	EA	1
5	21	PAFZZ	4820-02-102-6531	215-85	58553	VALVE, HAND .....	EA	1
5	22	PAFZZ		200RA4S4TAMG24V	70255	VALVE,SOLENOID.....	EA	1
5	23	PAFZZ		AMG24V50/60	70255	COIL ASSEMBLY .....	EA	1
5	24	PAFZZ	4730-00-720-0116	A2258	41947	ADAPTER,TUBE .....	EA	1
5	25	PAFZZ		239AW117020-503	91494	VALVE,HEAD PRES.....	EA	1
5	26	PAFZZ		SL-JBM	96103	HOSE.METALLIC .....	EA	1
5	27	PAFZZ	4710-00-203-3173	ASTMB 280.5000D	81346	TUBING, COPPER .....	FT	1
5	28	FAFZZ	47100-00-203-3174	ASTMB280.6250D	81346	TUBING COPPER .....	FT	1
5	29	PAOZZ	5305-00-993-1848	MS35207-265	96906	SCREW, MACHINE .....	EA	2
5	30	PAOZZ	5310-00-809-8546	MS27183-8	96906	WASHER,FLAT .....	EA	1
5	31	PAOZZ	5310-00-877-5797	MS21044N3	96906	NUT.SELF-LOCK.....	EA	2

Change 2 17



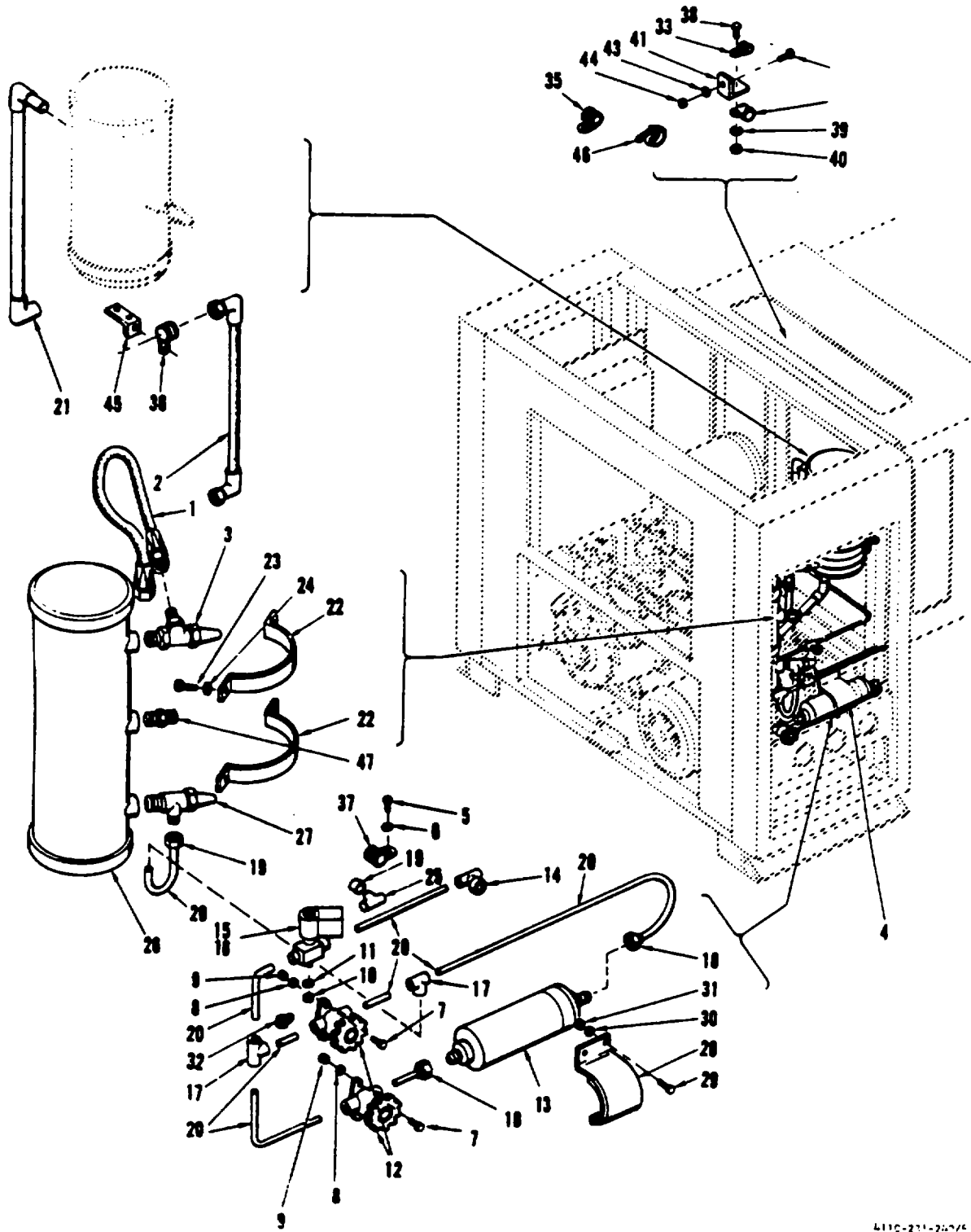
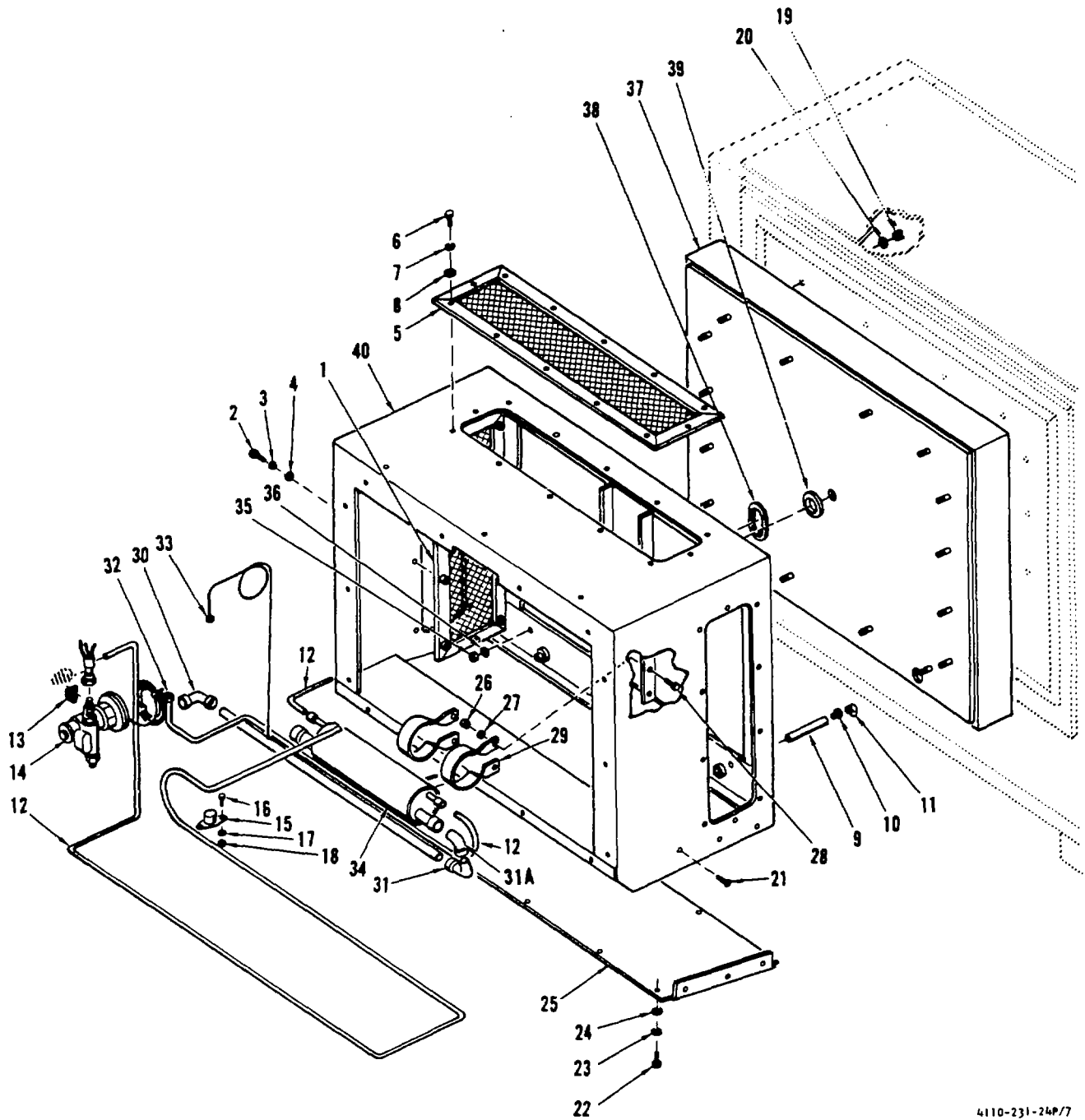


Figure 6. Refrigerant Piping and Valves, Filter-Drier, and Receiver

(1) ILLUSTRATION		(2)	(3)	(4)	(5)	(6) DESCRIPTION	(7)	(8)
(a) FIG NO.	(b) ITEM NO.	SMR CODE	FEDERAL STOCK NUMBER	PART NUMBER	FSCM	USABLE ON CODE	U/M	QTY INC IN UNIT
6	1	PAFZZ		AC244	90598	HOSE ASSY .....	EA	1
6	2	PAFZZ		AC245	90598	HOSE ASSY .....	EA	1
6	3	PAFFZ	4820-00-775-6705	606B100	58553	VALVE, RECEIVIE .....	EA	1
6	4	XBFZZ		AC234	90598	LIQUID LINE ASY .....	EA	1
6	5	PADZZ	5305-00-989-7434	MS35207-263	96906	SCREW, MACHINE .....	EA	2
6	6	PAOZZ	5310-00-045-3296	MS35338-43	96936	WASHER, LOCK .....	EA	2
6	7	PAOZZ	5305-00-993-1848	MS35207-265	96906	SCREW, MACHNE .....	EA	4
5	8	PAOZZ	5310-00-809-8546	MS27183-8	96906	WASHER FLAT .....	EA	4
6	9	PAOZZ	5310-00-877-5797	MS21044N3	96906	NUT, SELF-LOCK .....	EA	4
6	10	PAOZZ	5310-00-880-7745	MS51968-11	96906	NUT, PLAIN, HEX .....	EA	1
6	11	PAOZZ	5310-00-209-0965	MS35338-47	96906	WASHER, LOCK .....	EA	1
6	12	PAFZZ	4820-00-102-6531	215-85	58553	VALVE, HAND .....	EA	2
6	13	PAFZZ	4130-00-922-7083	MS35845-3	96906	FILTER-DRIER .....	EA	1
6	14	PAFZZ	6680-00-106-9904	MS17798-11	96906	INDICATOR, MOIST .....	EA	1
6	15	PAFZZ		200RAS4TAM24V	70255	VALVE SOLENOID .....	EA	1
6	16	PAOZZ		AMG4V50/60	70255	COIL ASSE8BLY .....	EA	1
6	17	PAFZZ	4730-00-263-6465	MS35929-4	96906	TEE, TUBE .....	EA	2
6	18	PAFZZ	4133-00-228 0826	641FS1-2	30327	NUT, FLARE .....	EA	2
6	19	PAFZZ	4820-00-936-2235	VUS3-46AC	07295	VALVE CHARGING .....	EA	1
6	20	PAFZZ	4710-00-203-3173	ASTMB280.5000D	81346	TUBINGCOPPER .....	FT	1
6	21	XBFZZ		AC226	90598	SUCTION LINE .....	EA	1
6	22	XBOZZ		604900-101	90598	STRAP, MOUNTING .....	EA	4
6	23	PAOZZ	5305-00-269-2805	MS90726-62	96906	SCREW, MACHINE .....	EA	8
6	24	PALZZ	5310-03-080-6004	MS127183-14	96906	WASHER, FLAT .....	EA	8
6	25	PAFZZ	4730-00-203-4922	W4002	41947	TEE TUBE .....	EA	1
6	26	XBFZZ		604837	90598	RECEIVER, REFIG .....	EA	1
6	27	PAFZZ	4870-00-226-1580	605X1	58553	VALVE, RECEIVER .....	EA	1
6	28	XBOZZ		AC144-01	90598	BRACKET .....	EA	1
6	29	PAOZZ	5305-00-068-0506	MS90726-6	96906	SCREW, MACHINE .....	EA	2
6	30	PAOZZ	5130-00-809-4058	MS2718-10	96906	WASHER, FLAT .....	EA	2
6	31	PAOZZ	5310-00-959-7600	MS51922-5	96906	NUT, SELF-LOCK .....	EA	2
6	32	PAOZZ	5343-00-106-0555	MS219190G2	96906	CLAMP .....	EA	1
6	33	PAOZZ	5340-00-105-8328	MS1919DG5	96906	CLAMP .....	EA	1
6	34	PAOZZ	5343-00-251-8291	M521919DG7	96906	CLAMP .....	EA	1
6	35	PAOZZ	5340-00-598-0597	MS219190G8	96906	CLAMP .....	EA	1
6	36	PAOZZ	5340-00-598-4201	MS219190G11	90906	CLAMP .....	EA	7
6	37	PAOZZ	5340-00-200-2729	MS219190G14	96906	CLAMP .....	EA	7
6	38	PAOZZ	5305-00-993-1848	MS35207-265	96906	SCREW, MACHINE .....	EA	15
6	39	PAOZZ	5310-00-809-8546	MS27183-8	96906	WASHER, FLAT .....	EA	15
6	40	PAOZZ	5310-00-877-5797	MS21044N3	96906	NUT, SELF-LOCK .....	EA	15

(1) ILLUSTRATION		(2)	(3)	(4)	(5)	(6)	(7)	(8)
(a) FIG NO.	(b) ITEM NO.	SMR CODE	FEDERAL STOCK NUMBER	PART NUMBER	FSCM	DESCRIPTION  USABLE ON CODE	U/M	QTY INC IN UNIT
6	41	XBOZZ		605057	90598	SUPPORT, CLAMP .....	EA	1
6	42	PAOZZ	5305-00-993-1848	MS35207-265	96906	SCREW, MACHINE .....	EA	1
6	43	PAOZZ	5310-00-809-8546	MS27183-8	96906	WASHER,FLAT .....	EA	1
6	44	PAOZZ	5310-00-877-5797	MS21044N3	96906	NUT, SELF-LOCK.....	EA	1
6	45	XBOZZ		AC246	90598	BRACKET, CLAW .....	EA	2
6	46	XBOZZ	MS17821-1	MS17821-1	96906	STRAP, RETAINING .....	EA	40
6	47	XBFZZ	5340-00-917-3854	FU6C212	58553	PLUG, FUSIBLE .....	EA	1
6	48	PAFZZ	4820-00-24-3954	A15631	41947	VALVE, CHECK.....	EA	1
6	49	PAFZZ	4730-00-839-6380	W2326	41947	ELBOW, TUBE .....	EA	1
6	50	PAFZZ	4730-00-720-0116	A2258	41947	COUPLING,TUBE.....	EA	1
Change 1					20			

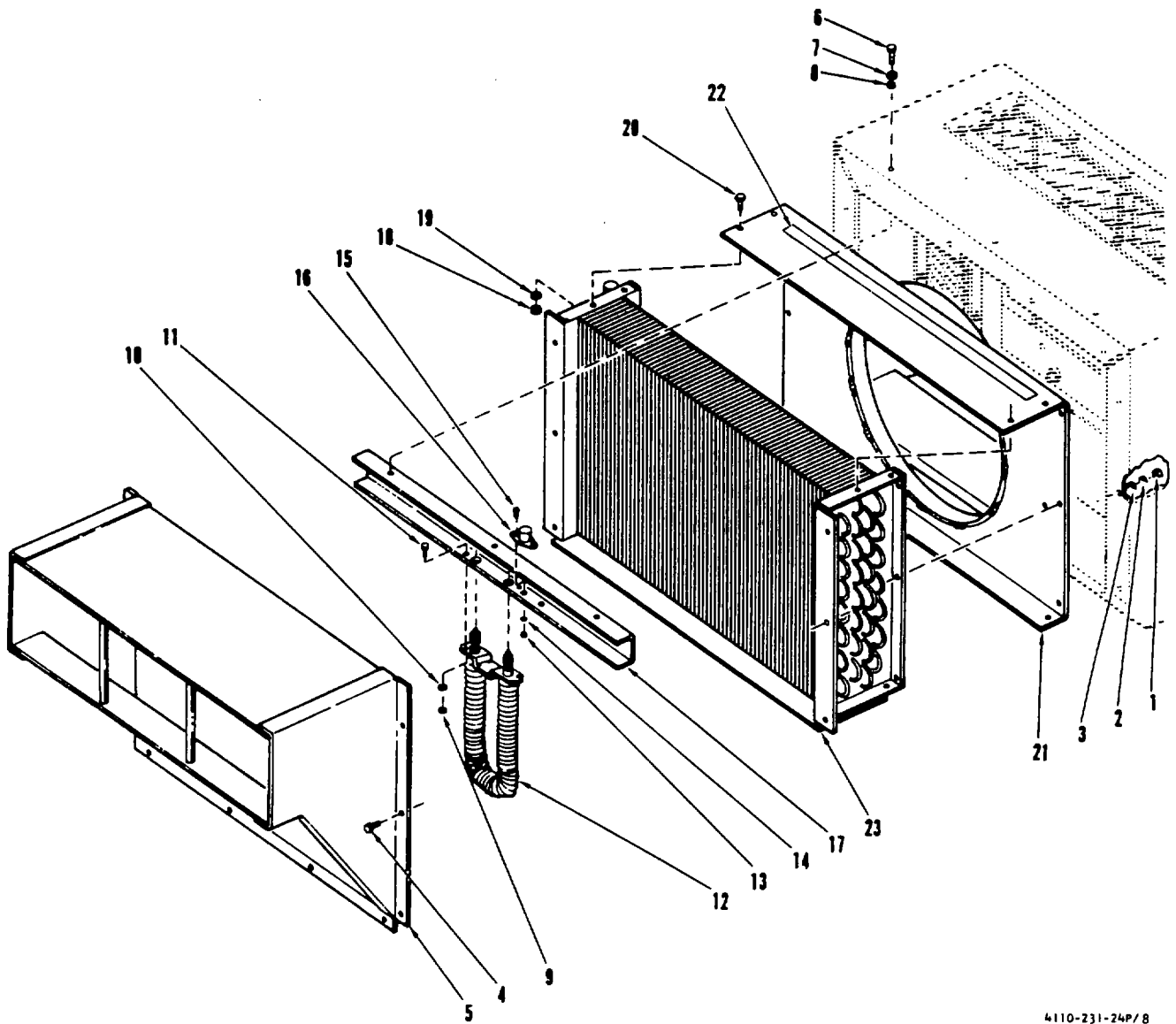


4110-231-24P/7

Figure 7. Evaporator Coil and Attaching Parts

(1) ILLUSTRATION		(2)	(3)	(4)	(5)	(6)	(7)	(8)
(a) FIG NO.	(b) ITEM NO.	SMR CODE	FEDERAL STOCK NUMBER	PART NUMBER	FSCM	DESCRIPTION  USABLE ON CODE	U/M	QTY INC IN UNIT
						GROUP 06 EVAPORATER COIL AND ATTACHING PAR		
7	1	XBOZZ		30001	90598	GRILLE, EVAP .....	EA	2
7	2	PAOZZ	5305-00-993-2461	MS35207-281	96906	SCREW, SING PLT .....	EA	16
7	3	PAOZZ	5310-00-582-5965	MS35338-44	96906	WASHER, ZING PLT .....	EA	16
7	4	PAOZZ	5310-00-823-8804	MS27183-9	96906	WASHER, ZING PLT .....	EA	16
7	5	XBOZZ		30002	90598	GRILLE, EVAP .....	EA	1
7	6	PAOZZ	5305-00-993-2738	MS35207-280	96906	SCREW, ZINC PLT .....	EA	12
7	7	PAOZZ	5305-00-993-2738	MS35338-44	96906	WAHER, LOCK Z.P. ....	EA	12
7	8	PAOZZ	5310-00-823-8804	MS27183-9	96906	WASHER, FLAT Z.P. ....	EA	12
7	9	XBOZZ		4230T135 5/8 ID	26161	HOSE DRAIN .....	FT	2
7	10	XBOZZ		605035	90598	NIPPLE, PLASTIC .....	EA	2
7	11	XBOZZ		605036	90598	ELBOW, PLASTIC .....	EA	2
7		XBOZZ		KTV732	71984	ADHESIVE, SEALER .....	TB	V
7	12	PAFZZ		605055	90598	TUBE, HOT GAS .....	EA	1
7	13	XBOZZ		30016	90598	BRACKET, CLAMP .....	EA	2
7	14	PAFZZ	TCLE2FW5A 1/2x5/8	MS1782-4	70255	VALVE, EXPANSION .....	EA	1
7	15	PAOZZ		20640L6-402-331-L55-1.5-36IN LDS	82647	SWITCH, THERMAL .....	EA	1
7	16	PADZZ	5305-00-984-6193	MS35206-245	96906	SCEW, MACHINE .....	EA	1
7	17	PADZZ	5305-00-082-1404	MS27183-6	96906	WASHER, FLAT .....	EA	2
7	18	PAOZZ	5310-00-877-5795	MS21044N8	96906	NUT, SELF-LOCK .....	EA	2
7	19	PAOZZ	5310-00-984-3806	MS51922-9	96906	NUT, SELF-LOCK .....	EA	14
7	20	PAOZZ	5310-00-081-4219	MS27183-12	96906	WASHER, FLAT .....	EA	14
7		XBFFZ		AC215-01	90598	EVAPORATOR ASSY .....	EA	1
7	21	PAOZZ	5305-00-985-9106	MS35191-292	96906	SCREW FLAT HEAD .....	EA	6
7	22	PAOZZ	5305-00-068-0506	MS90726-6	96906	SCREW, CAP, HEX .....	EA	10
7	23	PAOZZ	5310-00-194-1483	MS35333-44	96906	WASHER, LOCK .....	EA	10
7	24	PAOZZ	5310-00-809-4058	MS27183-10	96906	WASHER, FLAT .....	EA	10
7	25	XBOZZ		AC124-01	96909	.COVER, BOTTOM .....	EA	1
7	26	PAOZZ	5130-00-959-7600	MS51922-5	96906	NUT, SELF-LOCK .....	EA	4
7	27	PAOZZ	5310-00-809-4058	MS27183-10	96906	WASHER, FLAT .....	EA	4
7	28	PAOZZ	5305-00-068-0506	MS90726-6	96906	SCREW, CAP, HEX .....	EA	4
7	29	XBOZZ		605468	90598	STRAP, MOUNTING .....	EA	2
7		XHFZZ		AC224-01	90598	HEAT EXCHANGER .....	EA	1
7	30	PAFZZ	4730-00-818-3872	MS35022-97	96906	ELBOW, TUBE .....	EA	1
7	31	PAFZZ	4730-00-235-4066	MS35928-9	96906	ELBOW, TUBE .....	EA	2
7	31A	PAFZZ	4730-00-541-7182	W2644	41947	ELBOW, TUBE .....	EA	1
7	32	PAFZZ	4730-00-228-0826	MS35872-4	96906	NUT, FLARE .....	EA	1
7	33	PAFZZ	4730-00-189-2737	MS35872-2	96906	NUT, FLARE .....	EA	1
7	34	XBFFZ		1679X5	58553	HEAT EXCHANGER .....	EA	1

(1) ILLUSTRATION		(2)	(3)	(4)	(5)	(6)	(7)	(8)
(a) FIG NO.	(b) ITEM NO.	SMR CODE	FEDERAL STOCK NUMBER	PART NUMBER	FSCM	DESCRIPTION  USABLE ON CODE	U/M	QTY INC IN UNIT
7	35	PAOZZ	5310-00-984-3806	MS51922-9	96906	.NUT, SELF-LOCK.....	EA	16
7	36	PAOZZ	5310-00-4219	MS27183-12	96906	.WASHER, FLAT .....	EA	16
7	37	XBFZZ		AC216-01	90598	BULKHEAD .....	EA	1
7	38	XBFZZ		MS21266-3N	96906	.GROMMET, EDGING .....	FT	V
7	39	XBFZZ		6055530	90598	.WASHER FLAT .....	EA	1
7	40	XBFZZ		AC213-01	90598	.PLENUM, EVAP .....	EA	1
24 (25 Blank)								



4110-231-24P/8

Figure 8. Evaporator Coil and Attaching Parts

(1) ILLUSTRATION		(2)	(3)	(4)	(5)	(6)	(7)	(8)
(a) FIG NO.	(b) ITEM NO.	SMR CODE	FEDERAL STOCK NUMBER	PART NUMBER	FSCM	DESCRIPTION  USABLE ON CODE	U/M	QTY INC IN UNIT
8	1	PAOZZ	5310-00-959-7600	MS51922-5	96906	NUT, SELF-LOCK.....	EA	10
8	2	PAOZZ	5310-00-582-5965	MS35338-44	96906	.WASHER, LOCK .....	EA	10
8	3	PAOZZ	5310-00-809-4058	MS27183-10	96906	WASHER, FLAT .....	EA	14
8	4	PAOZZ	5305-00-068-0506	MS90726-6	96906	..SCREW CAP HEX.....	EA	14
8	5	XBFZZ		30000	90598	..SHOUT EVAP.....	EA	1
8	6	PAOZZ	5305-00-068-0506	MS90726-6	96906	SCREW, CAP HEX.....	EA	3
8	7	PAOZZ	5310-00-809-4058	MS27183-10	96906	WASHER, FLAT .....	EA	3
8		PAOZZ	5310-00-582-5965	MS35338-44	96906	WASHER, LOCK .....	EA	3
8	2	XBFZZ		AC218-01	96906	..HEATER, ASSY.....	EA	1
8	9	PAOZZ	5301-00-877-5797	MS21044N3	96906	NUT, SELF-LOCK.....	EA	1
8	10	PAOZZ	5310-00-809-8546	MS27183-8	96906	WASER, FLAT .....	EA	2
8	11	PAOZZ	5305-00-989-7435	MS35207-264	96906	..SCREW, MACHINE .....	EA	2
8	12	PAOZZ	4540-01-080-7214	118-026722-005	65586	..HEATER .....	EA	1
8	13	PAOZZ	5310-00-877-5795	MS21044N8	96906	..NUT, SELF-LOCK.....	EA	2
8	14	PAOZZ	5310-00-082-1404	MS27183-6	96906	..WASHER, FLAT .....	EA	2
8	15	PAOZZ	5305-00-984-6193	MS35206-245	96906	SCREW, MACHINE .....	EA	2
8	16	PAOZZ		30017	90598	..SWITCH, THERMOSTAT IC.....	EA	1
8	17	XBOZZ		AC217-01	90598	..SUPPORT, HEATER .....	EA	1
8	18	PAOZZ	5310-00-959-7600	MS51922-5	96906	..NUT, SELF-LOCK.....	EA	12
8	19	PAOZZ	5310-00-809-4058	MS27183-10	96906	..WASHER, FLAT .....	EA	12
8	20	PAOZZ	5310-00-098-0506	MS90726-6	96906	..SCREW, CAP, HEX .....	EA	12
8	21	XBOZZ		AC219-01	90598	..SCROUD, EVAP.....	EA	12
8	22	XBFZZ		30029	90598	..STIFFENER EVAP .....	EA	1
8	23	PAFZZ		605459	90598	..COIL EVAPORATOR.....	EA	1

Change 2 27



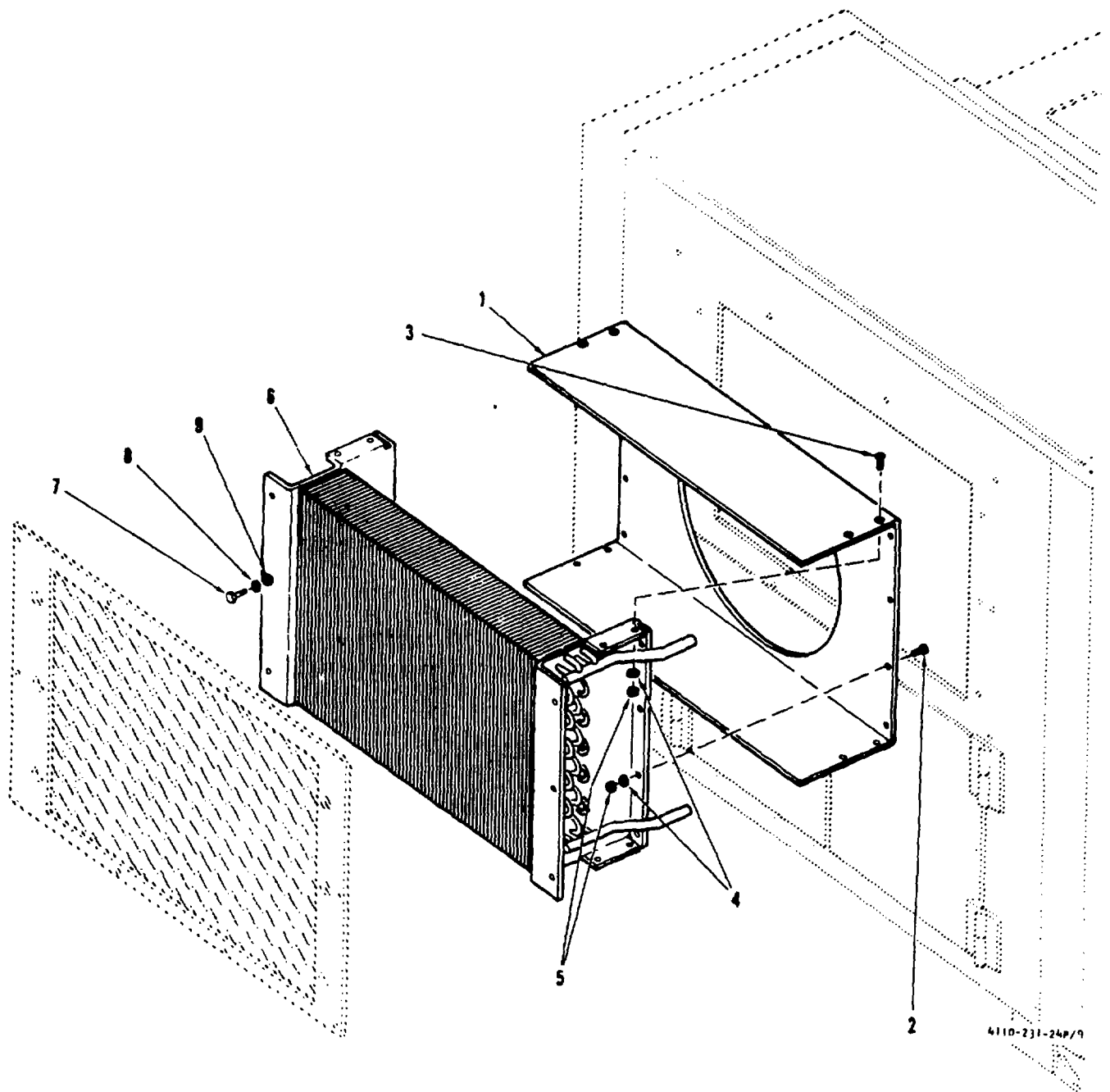
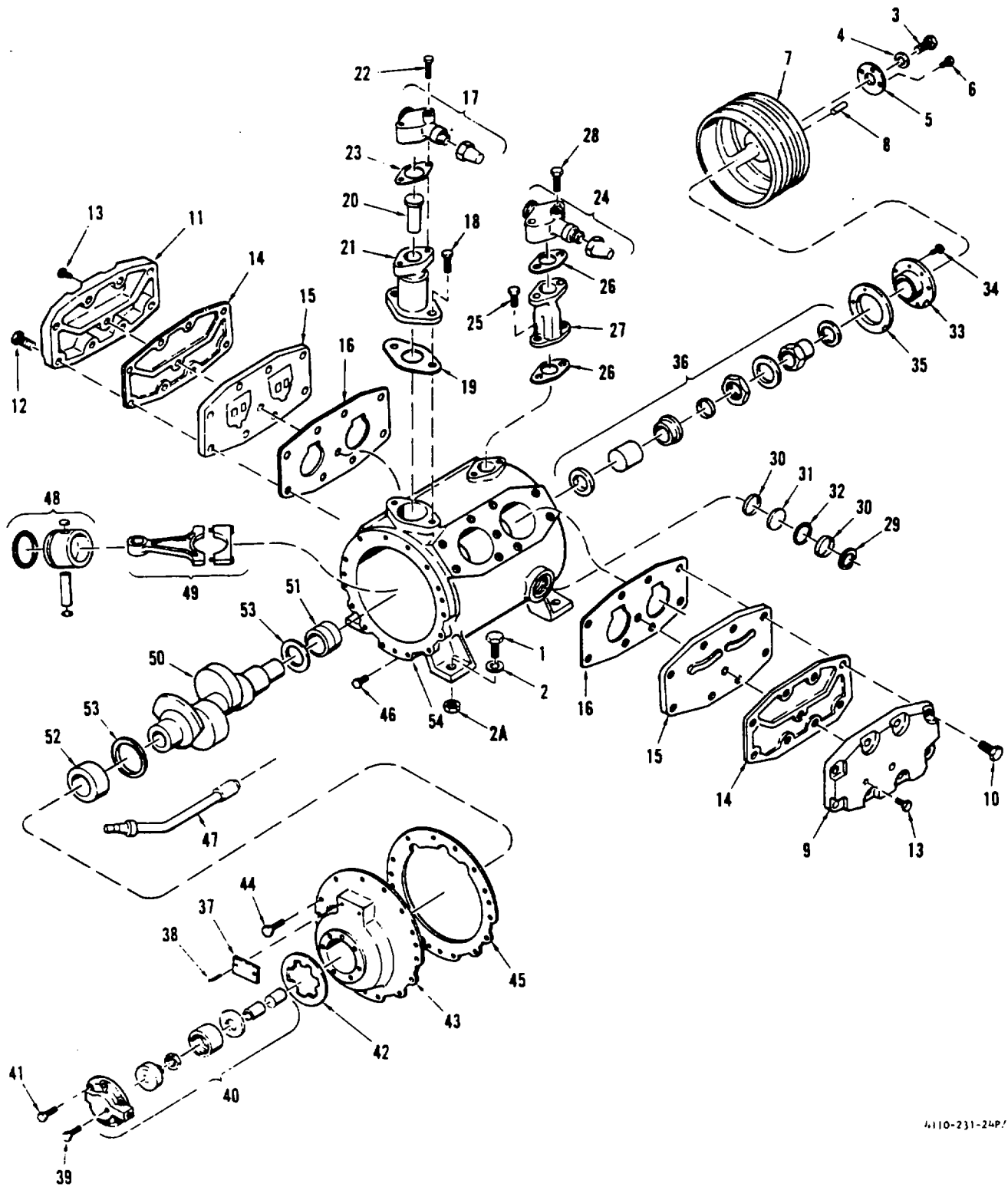


Figure 9. Condenser Coil and Attaching Parts

(1) ILLUSTRATION		(2)	(3)	(4)	(5)	(6) DESCRIPTION	(7)	(8)
(a) FIG NO.	(b) ITEM NO.	SMR CODE	FEDERAL STOCK NUMBER	PART NUMBER	FSCM	USABLE ON CODE	U/M	QTY INC IN UNIT
						GROUP 07 CONDENSER COIL AND ATTACHING PART		
9	1	HBOZZ		605491	90598	SHROUD,COIL .....	EA	1
9	2	PAOZZ	5305-00-068-0501	MS90725-5	96906	SCREW, MACHINE .....	EA	6
9	3	PAOZZ	5305-00-0680-0501	MS35191-289	96906	SCREW, FLAT HEAD .....	EA	8
9	4	PAOZZ	5310-00-809-4058	MS27183-10	96906	.WASHER, FLAT .....	EA	20
9	5	PADZZ	5310-00-95-7600	MS51922-5	96906	NUT, SELF-LOCK .....	EA	14
9	6	PAFZZ		60548	90598	COIL ,CONDENSER .....	EA	1
9	7	PADZZ	5305-00-269-2803	MS90726-60	96906	SCREW, MACHINE .....	EA	2
9	8	PADZZ	5310-30-637-9541	MS35338-46	96906	WASHER, LOCK .....	EA	6
9	9	PADZZ	5310-00-080-6004	MS27183-14	96906	WASHER, FLAT .....	EA	6
					<b>29</b>			



4110-231-24P/10

Figure 10. Compressor Assembly

SECTION II

(1) ILLUSTRATION		(2)	(3)	(4)	(5)	(6)	(7)	(8)
(a) FIG NO.	(b) ITEM NO.	SMR CODE	NATIONAL STOCK NUMBER	PART NUMBER	FSCM	DESCRIPTION  USABLE ON CODE	U/M	QTY INC IN UNIT
						GROUP 08 COMPRESSOR ASSEMBLY		
10	1	PAFZZ	5305-269-3215	MS90725-65	96906	SCREW, CAP, HEX.....	EA	4
10	2	PAFZZ	5318-06004	MS27183-14	96906	WASHER, FLAT.....	EA	4
10	2A	PAFZZ	5310-0-0874652	MS51922-17	96906	NUT, SELF-LOCK.....	EA	4
10		PAFFH	4130400126160	BP44-1	10119	COMPRESSOR.....	EA	1
10	3	PAOZZ	5305-01-51-2646	012P11	08537	•SCREW, PULLEY.....	EA	1
10	4	PAOZZ	28150-931-2222	012P01	10119	•WASHER, PULLEY.....	EA	1
10	5	XBOZZ		GA1778	08537	•STOPPLATE.....	EA	1
10	6	PAOZZ	53-01-035-3576	0166P09	10119	•SCREW, PINTLE.....	EA	3
10	7	XBOZZ		GC1435	06537	•FLYWHEEL.....	EA	1
10	8	PAOZZ	53150-963-0917	066P08	10119	•KEY, SHAFT.....	EA	1
10	9	XBFZZ		GG1155	08537	•HEAD, CYLINDER, L.....	EA	1
10	10	PAFZZ	5305-01-027-4958	012P19	10119	•SCREW, CYL HEAD.....	EA	9
10	11	XBOZZ		061147	08537	•HEAD CYLINDER, R.....	EA	1
10	12	PAFZZ	5305-01-027-4958	012P19	10119	•SCREW, CYL HEAD.....	EA	9
10	13	PAFZZ	473001-01591295	055P70	10119	•PLUG, PIPE.....	EA	2
10	14	PAFZZ	533067-5178	GB1089	10119	•GASKET, HEAD.....	EA	2
10	15	PAFZZ	4310-00-867-5186	GC1162	10119	•VALVE, PLATE.....	EA	2
10	16	PAFZZ	5330-01-193-1264	GKT375	10119	•GASKET, PLATE.....	EA	2
10	17	PAFZZ		VAL617	10119	•VALVE, SUCTION.....	EA	1
10	18	PAOZZ	5305-01-027-4957	012P13	10119	•SCREW, VALVE.....	EA	2
10	19	PAFZZ		GA1775	10119	•GASKET, VALVE.....	EA	1
10	20	XBOZZ		GA480	08537	•STRAINER, VALVE.....	EA	1
10	21	XBFZZ		ADP25	08537	•ADAPTER, SUCTION.....	EA	1
10	22	PAFZZ	5306-01-26-5035	011P11	10119	•SCREW, ADAPTER.....	EA	2
10	23	PAFZZ	53300-963-0905	GA1820	08537	•GASKET, ADAPTER.....	EA	1
10	24	PAFZZ	4820-00-752-8711	VAL615	10119	•VALVE, DISCHARGE.....	EA	1
10	25	PAFZZ	5305-01-027-4957	012P13	10119	•SCREW VALVE.....	EA	2
10	26	PAFZZ	533-00867-5187	GA1010	10119	•GASKET, VALVE.....	EA	2
10	27	XBFZ		ADP89	08537	•ADAPTER, VALVE.....	EA	1
10	28	PAFZZ	53061-026-5035	011PII	10119	•SCREW, ADAPTER.....	EA	2
10	29	XBFZZ		GA211	08537	•RETAINER, GLASS.....	EA	2
10	30	XBFZZ		GA212	08537	•RING, GLASS.....	EA	2
10	31	XBFZZ		GA210	08537	•SIGHT, GLASS.....	EA	2
10	32	XBFZZ		GA213	08537	•GASKET, GLASS.....	EA	1
10	33	XBFZZ		GA1780	08537	•COVER, SEAL.....	EA	1
10	34	XBFZZ		0166PO8	08537	•SCREW, COVER.....	EA	6
10	35	PAFZZ	533040-929-5456	GA1779	10119	•GASKET, COVER.....	EA	1
10	36	PAFZZ	41300-867-5180	GA1781	10119	•SEAL ASSY.....	EA	1
10	37	XBOZZ		PLT210	08537	•PLATE, IDENT.....	EA	1

(1) ILLUSTRATION		(2)	(3)	(4)	(5)	(6) DESCRIPTION	(7)	(8)
(a) FIG NO.	(b) ITEM NO.	SMR CODE	FEDERAL STOCK NUMBER	PART NUMBER	FSCM	USABLE ON CODE	U/M	QTY INC IN UNIT
10	38	XBOZZ		065P14	08537	.PIN, DRIVE.....	EA	2
10	39	XBFZZ		055P70	08537	.PLUG, PUMP PLATE .....	EA	1
10	40	PAFZZ	4130-00-803-9024	PMP83A	10119	.OIL PUMP ASSY .....	EA	1
10	41	PAFZZ		010P10	10119	.SCREW.OIL PUMP .....	EA	6
10	42	PAFZZ	5330-00-803-9021	GKT298	10119	.GASKET, OIL PUMP .....	EA	1
10	43	XBFZZ		PLT580	08537	.END PLATE .....	EA	1
10	44	PAFZZ	5306-00-026-5037	011P10	10119	.SCREW, END PLATE .....	EA	17
10	45	PAFZZ		GA1794	10119	.GASKET .....	EA	1
10	46	PAFZZ		0355P80	10119	.PLUG, OIL DRAIN .....	EA	1
10	47	XBFZZ		GA1784	08537	.OIL STRAINER .....	EA	1
10	48	PAFZZ	4130-00-963-0920	GA1116	10119	.PISTON ASSY .....	EA	4
10	49	PAFZZ	4130-00-963-0919	GC1156	10119	.CONNECTING ROD .....	EA	4
10	50	PAFZZ	4130-00-803-9006	CKS47	08537	.CRANKSHAFT .....	EA	1
10	51	PAFZZ	4130-00-963-0908	GA481	08537	.BEARING .....	EA	2
10	52	PAFZZ		GRG96	08537	.BEARING .....	EA	1
10	53	PAFZZ	4130-00-803-9004	WAS78	08537	.WASHER, THRUST .....	EA	2
10	54	XBFZZ		CCS71	10119	.CRANKCASE .....	EA	1

Change 1 32

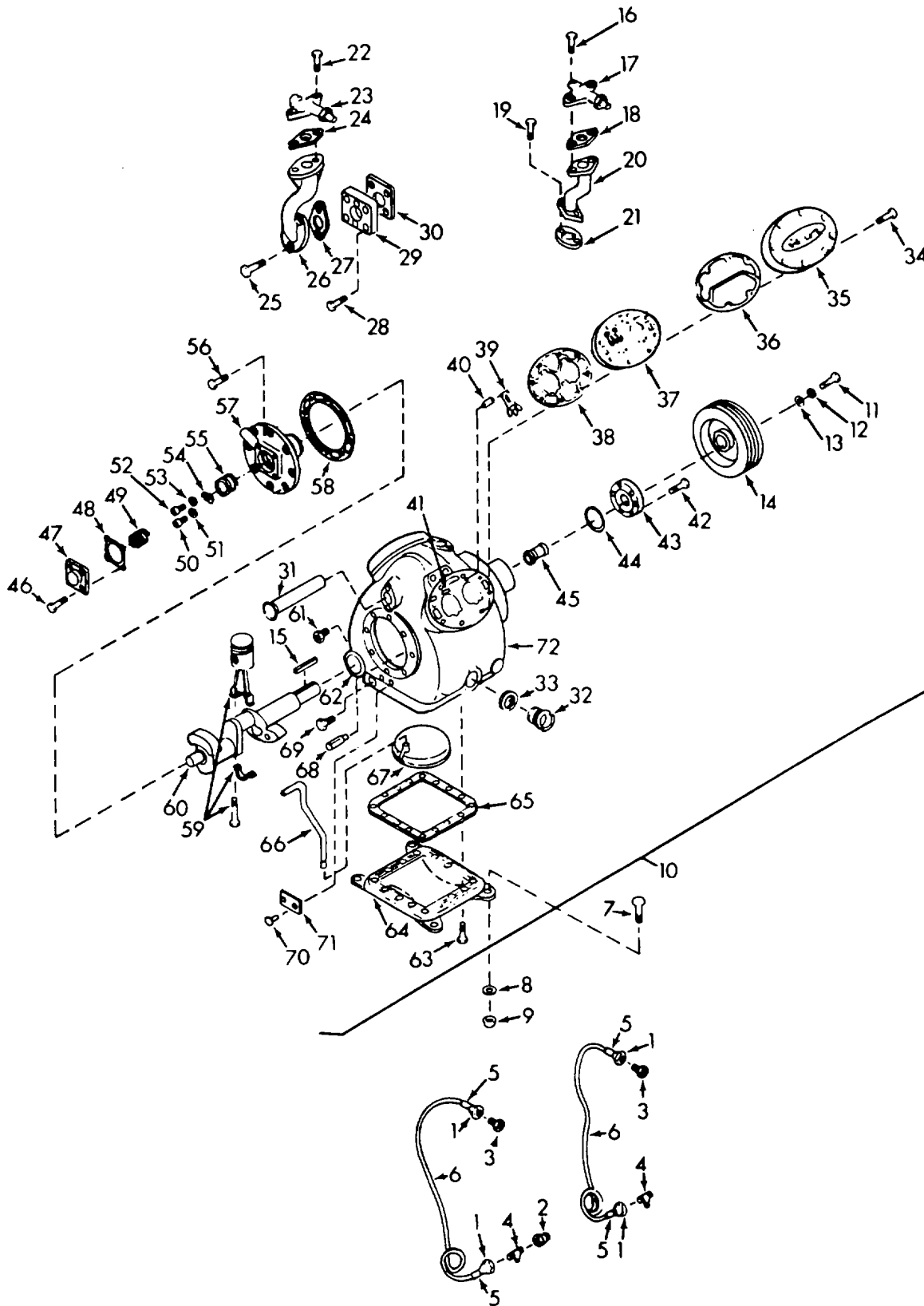


Figure 10A Compressor, Belt Driven  
Change 1 32.1

SECTION II

(1) ILLUSTRATION		(2)	(3)	(4)	(5)	(6)	(7)	(8)
(a) FIG NO.	(b) ITEM NO.	SMR CODE	NATIONAL STOCK NUMBER	PART NUMBER	FSCM	DESCRIPTION  USABLE ON CODE	U/M	QTY INC IN UNIT
10A	1	PAFZZ	4730-00-189-2737	41947	A5051	NUT, TUBE COUPLING .....	EA	4
10A	2	PAFZZ	4730-00-260-8284	41947	A4544	CAP, TUBE .....	EA	1
10A	3	PAFZZ	4730-00090-0832	41947	A4622	COUPLING, FEMALE .....	EA	2
10A	4	PAFZZ	4730-00-257-2098	41947	A345	TEE, PIPE TO TUBE .....	EA	2
10A	5	MFFFF		94833	12076-3-1500	TUBING COPPER FLARE .....	EA	4
10A	6	MFFFF		94833	12075-1-96000	TUBE STRAIGHT .....	EA	2
10A	7	XDFZZ	5305-0942-2196	96906	MS90728-60	SCREW, CAP, HEXAGON HEAD .....	EA	4
10A	8	PAFZZ	5310(-087-7493	96906	MS27183-13	WASHER, FLAT .....	EA	4
10A	9	XBFZZ	5310--298-9284	94833	53576-19	NUT, SELF-LOCKING, HEXAGON .....	EA	4
10A	10	PAFFF	4130-01-091-9159	10855	5D43-139-A	COMPRESSOR, REFRIGERANT .....	EA	1
10A11	PAFZZ	5305-(00-378-2804		10655	AA06BR200D	•SCREW, CAP, HEXAGON HEAD .....	EA	1
10A	12	XBFZZ		10855	AU11AR201	•LOCKWASHER, SPRING .....	EA	1
10A	13	XBFZZ		10855	AUO4AB201	•WASHER, FLYWHEEL RETAINING .....	EA	1
10A	14	PAFZZ	4130-01-136-9615	10655	5D43-1103	•FLYWHEEL .....	EA	1
10A	15	PBFZZ	5315-00-956-5683	96906	MS2006-229	•KEY, SQUARE .....	EA	1
10A	16	XBFZZ		10855	AA06BR205	•SCREW, CAP, HEXAGON HEAD .....	EA	2
10A	17	PAFZZ	4130-00-453-6272	10855	EN07AA271	•VALVES .....	EA	1
10A	18	PAFZZ	533-00-809-9573	10855	6D23-1421	•GASKET .....	EA	1
10A19	XBFZZ	10855		AA06BR203	•SCREW, CAP, HEXAGON HEAD .....	EA	2	
10A	20	XBOZZ		10855	5D43-1023	•ADAPTER, DISCHARGE .....	EA	1
10A	21	PAFZZ	5330-00-809-9573	10855	6D23-1421	•GASKET .....	EA	1
10A	22	XBFZZ		10655	A06BR205	•SCREW, CAP, HEXAGON HEAD .....	EA	2
10A	23	PAFZZ	482-00-316-2659	10655	EN07AA348	•VALVE, SERVICE COMPRESSION .....	EA	1
10A	24	PAFZZ	5330-01-111-9287	10855	6D40-1131	•GASKET, SUCTION VALVE .....	EA	1
10A	25	PAFZZ	5305-00-225-8507	96906	MS90725-43	•SCREW CAP, HEXAGON HEAD .....	EA	2
10A	26	XBFZZ		10855	5D43-1013	•ADAPTER, SUCTION VALVE .....	EA	1
1DA	27	PAFZZ	5330-01-111-9287	10855	6D40-1131	•GASKET, SUCTION VALVE .....	EA	1
10A	28	PAFZZ	5305-00-3782804	10855	AA06BR200	•SCREW, CAP HEXAGON HEAD .....	EA	4
10A	29	XBFZZ		10855	5D40-1162	•COVER, SUCTION MANIFOLD .....	EA	1
10A	30	PAFZZ	533001-111-9288	10855	5D40-1182	•GASKET, SUCTION MANIFOLD COVER .....	EA	1
10A	31	PAFZZ	4130-00-785-5132	10855	6040112	•STRAINER, SUCTION .....	EA	1
10A	32	PAFZZ	4130-00-2024482	10855	5F20-781	•INDICATOR, SIGHT, LIQUID .....	EA	2
10A	33	PAFZZ	531000-914-0429	10855	5F201631	•WASHER, FLAT .....	EA	2
10A	34	XBFZZ	530501-102-1783	10655	AA06BR237	•SCREW, CAP, HEXAGON HEAD .....	EA	16
10A	35	XDFZZ	4130-00-795-0345	10855	6D40-2163	•HEAD COMPRESSOR .....	EA	2
10A	36	PAFZZ		10855	17-55001	•GASKET, CYLINDER HEAD .....	EA	2
10A	37	PAFZ	2990-01-124-6175	10855	5D43-132	•VALVE PATE ASSEMBLY .....	EA	2
10A	38	PAFZZ	533001-110.9276	10855	05DA500153	•GASKET, VALVE PLATE .....	EA	2
10A	39	PAFZZ	4130-00791-5312	10855	6048-1072	•VALVE, SUCTION .....	EA	4
10A	40	PAFZZ	53600-506-0641	10855	6040-10217	•SPRING, HELICAL, COMP SUCTION VALVE EA	EA	4

Change 5 32.2

SECTION II

(1) ILLUSTRATION		(2)	(3)	(4)	(5)	(6)	(7)	(8)
(a) FIG NO.	(b) ITEM NO.	SMR CODE	NATIONAL STOCK NUMBER	FSCM	PART NUMBER	DESCRIPTION  USABLE ON CODE	U/M	QTY INC IN UNIT
10A	41	XBFZZ	5315-00-260-0712	10855	7J1-6032	PIN, STRAIGHT .....	EA	8
10A	42	XBFZZ		10855	AA06BR202	CAPSCREW, HEXAGON HEAD .....	EA	6
10A	43	XBFZZ		10855	5D23-242	COVER PLATE ASSABLY .....	EA	1
10A	44	PAFZZ	4130-00-110-4010	10855	5D23-1002	GASKET, SHAFT SEAL OVER PLATE .....	EA	1
10A	45	PAFZZ	5330-01-133-0749	10855	5D23-143	SEAL, SHAFT ASSEMBLY .....	EA	1
10A	46	PAFZZ	5305-01-097-8792	10855	AA06BR199	SCREW, CAP, HEXAGON HEAD .....	EA	4
10A	47	XBFZZ		10855	7J1-6002	GASET MANIOLD .....	EA	1
10A	48	PAFZZ	5330-00-812-2395	10855	6D40-1061	GASKET .....	EA	1
10A	49	PAFZZ	5360-00-719-5463	10855	6D40-1112	SPRING, HELICAL, COMP FEED GUIDE VANE ...	EA	1
10A	50	XBFZZ		10855	AB44AA166	SCREW, CAP, SOCKET HEAD .....	EA	1
10A	51	PAFZZ	5310-00-687-8571	10855	AU61ML171	WASHER, LOCK .....	EA	1
10A	52	PAFZZ	5305-01-149-6263	10855	AB44AA126	SCREW, CAP, SOCKET HEAD .....	EA	1
10A	53	PAFZZ	5310-00-687-8571	10855	AU61KL171	WASHER, LOCK .....	EA	1
10A	54	PAFZZ	4130-00-719-4809	10855	6D40-1171	GUIDE, OIL FEED .....	EA	1
10A	55	PAFFZ	4130-00-719-4810	10855	6D40-1191	DRIVE SEGMENT, OIL PUMP .....	EA	1
10A	56	XBFZZ	5305-00-577-5462	10855	AA06BR230	SCREW, CAP, HEXAGON HEAD .....	EA	8
10A	57	PBFZZ	3110-01-129-9017	10855	05DA400324	PLATE, BEARING RETAIER .....	EA	1
10A	58	PAFZZ	5330-00-977-7740	10855	6D40-1022	GASKET .....	EA	1
10A	59	PABZZ	2805-01-123-4925	10855	17-56026	PISTON AND PIN .....	EA	4
10A	60	PBFZZ	4310-01-129-7908	10855	05DA400193	CRARKSHA , COIRESSOR .....	EA	1
10A	61	PABZZ	4820-00-339-4818	10855	6D40-162	VALVE, SAFETY RELIEF .....	EA	1
10A	62	PBFZZ	3120-00-812-2382	10855	5D40-1311	BEARING, WASHER, THRU .....	EA	1
10A	63	XBFZZ	10855	10855	AA06BR228	SCREW, CAP, PUMP END .....	EA	16
10A	64	XBFZZ		10855	5D40-1033	PLATE, BOSTO .....	EA	1
10A	65	PAFZI	5330-00-034-8627	10855	6D40-1043	GASKET .....	EA	1
10A	66	XBFZZ		10855	6D40-1092	TUBE, OIL SUCTION .....	EA	1
10A	67	XBFZZ	4130-00-508-0642	10855	6D40-103	SCREEN, OIL STRAINE R .....	EA	1
10A	68	PAFZZ	4130-00-620-7000	10855	6D23-522	VALVE ASSEMBLY, RELIEF .....	EA	1
10A	69	XBFSZ		10855	C A63AA001	PIPE, PLUG, HEXAGON HEAD .....	EA	3
10A	70	PAFZZ	5305-0Q-019-2413	10855	AL81AF083	SCREW, DRIVE .....	EA	2
10A	71	XBFZZ		10855	5D43-252	PLAT .....	EA	1
10A	72	XBFZZ		10855	5D43-259	CRANXCASE ASSEMBLY .....	EA	1

Change 1 32.3/(32.4 Blank)



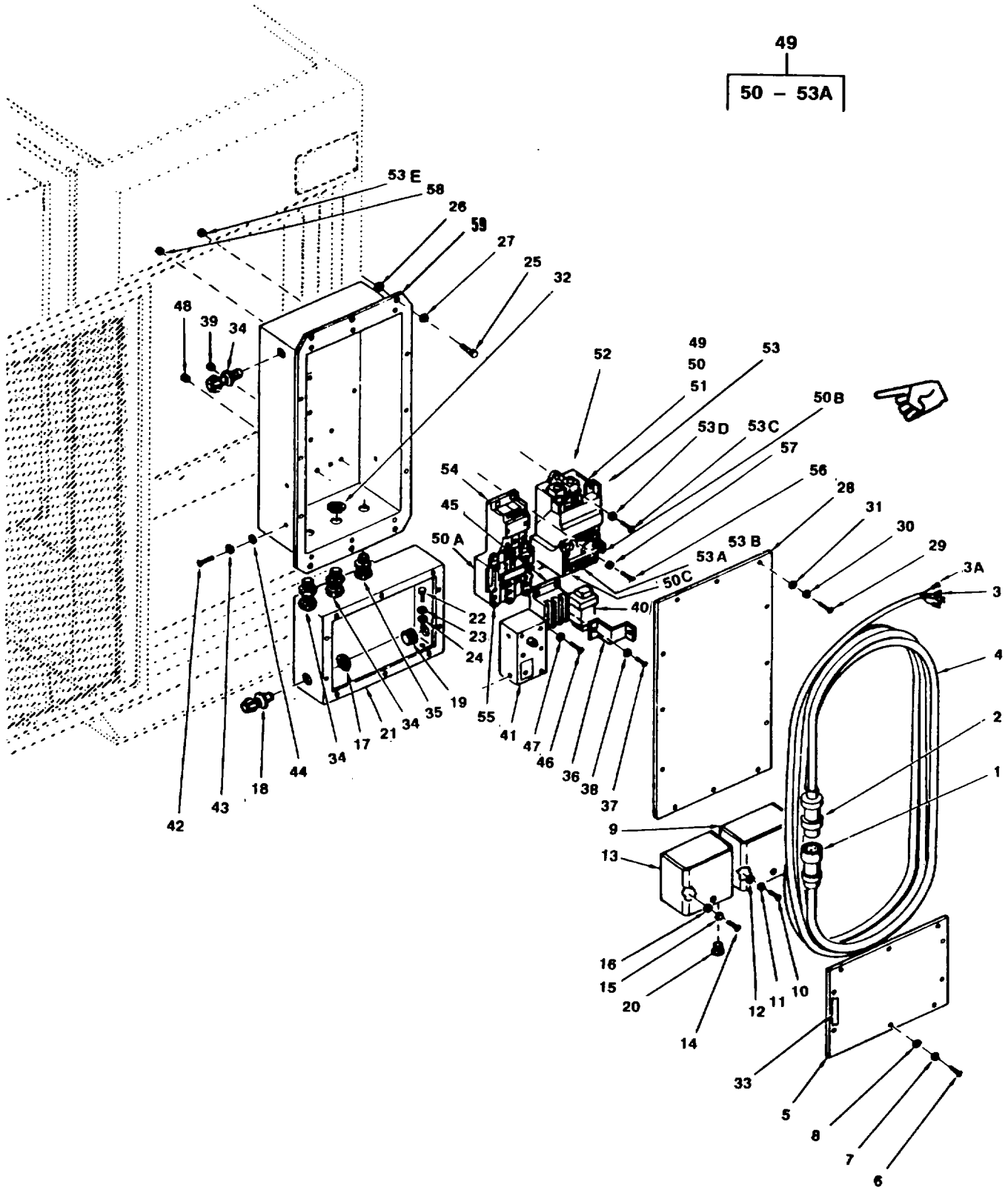


Figure 11. Electrical Control Box Assembly and Power Cable

(1) ILLUSTRATION		(2)	(3)	(4)	(5)	(6)	(7)	(8)
(a) FIG NO.	(b) ITEM NO.	SMR CODE	NATIONAL STOCK NUMBER	PART NUMBER	FSCM	DESCRIPTION  USABLE ON CODE	U/M	QTY INC IN UNIT
						GROUP 09 ELECTRIC MOTORS AND CONTROLS		
11		MOOFZ	AC238-01	90598		CABLE ASSEMBLY.....	EA	1
11	1	PAOZZ	59350176-719	534F8	90598	* CONNECTOR, ELECT.....	EA	1
11	2	PAOZZ	5935-014-5772	534MP	90598	* PLUG, ELECT.....	EA	1
11	3	PAOZZ	5945-0051-2446	RC2227	59730	* TERMINAL, LUG.....	EA	3
11	3A	PAOZZ	5945-01782934	RC2237	59730	* TERMINAL, LUG.....	EA	1
11	4	PAOZZ	8145-014082320	C045HLF (5/10) 0750	81349	* CABLE, POWER.....	FT	1
11	5	XBOZZ	A0240-3	90598		COVER.....	EA	1
11	6	PAOZZ	530500987434	MS35207-263	96906	SCREW, MACHINE.....	EA	10
11	7	PAOZZ	53100453296	MS3533843	96908	WASHER, LOCK.....	EA	10
11	8	PAOZZ	531-808546	MS27183-	96906	WASHER, FLAT.....	EA	10
11	9	PAFZZ	59300180-8244	PT204401	73475	SWITCH, PRESSURE.....	EA	1
11	10	PAOZZ	53054-98e7434	MS35207-263	9.906	SCREW, MACHINE.....	EA	2
11	11	PAOZZ	531040-809	MS271838	98906	WASHER, FLAT.....	EA	2
11	12	PAOZZ	53100965-1820	MS51922-3	96908	NUT, SELF-LOCK.....	EA	2
11	13	PAFZZ	5930-014680241	PT214401	73475	SWITCH, PRESSURE.....	EA	1
11	14	PAOZZ	5305 70-987434	MS35207-283	96906	SCREW, MACHINE.....	EA	2
11	15	PAOZZ	5310-00-809-8546	MS27183-8	96906	WASHER, FLAT.....	EA	2
11	16	PAOZZ	5310-00965-1020	MS51922-3	96906	NUT, SELF-LOCK.....	EA	2
11	17	XBOZZ	597540152-1075	141	59730	LOCKNUT, ELECT.....	EA	7
11	18	XBOZZ	5975-(945-0142	2520	59730	BUSHING, STRREL.....	EA	3
11	19	PAOZZ	532540-835-6439	2196S	70485	GROMMET, SPLIT.....	EA	1
11	20	PAOZZ	59750-177-2819	UB875	28520	BUSHING, PANEL.....	EA	2
11	21	XBOZZ	AC240	90598		BOX, SWITCH.....	EA	1
11	22	PAOZZ	530540-989-7434	MS35207-283	96906	SCREW, MACHINE.....	EA	4
11	23	PAOZZ	5310 50453296	MS35338-43	96906	WASHER, LOCK.....	EA	4
11	24	-PAOZZ	5310-008098546	MS27183-3	96906	WASHER, FLAT.....	EA	4
11	25	PAOZZ	530500-2693209	MS90725-58	96906	SCREW, CAP, HEX.....	EA	6
11	26	PAOZZ	5310-40806004	MS27183-14	96906	* WASHER, FLAT.....	EA	6
11	27	PAOZZ	5310-00874852	MS51922-17	96906	NUT, SELF-LOCK.....	EA	6
11		XBOZZ		AC203-01	90598	CONTROL BOX.....	EA	1
11	28	XBOZZ		AC241-02	90598	* COVER, BOX.....	EA	1
11	29	PAOZZ	5305SO-9-7435	MS35207-264	96908	* SCREW, MACHINE.....	EA	12
11	30	PAOZZ	531-000453296	MS35338-43	9e906	* WASHER, LOCK.....	EA	12
11	31	PAOZZ	531080954	MS27183-3	96906	* WASHER, FLAT.....	EA	12
11	32	PAOZZ	59750-152-1075	141	59730	* LOCKNUT, ELECT.....	EA	4
11	33	XBOZZ	54	111N118X112	86730	* GASKET.....	FT	V
11	34	XBOZZ	59s7s00296-18	2521	59730	* BUSHING, STR. REL.....	EA	3
11	35	XBOZZ		2522	59730	* BUSHING, STR. REL.....	EA	1
11	36	XBOZZ		AC242	90598	* BRACKET.....	EA	1

Change 5 35

(1) ILLUSTRATION		(2)	(3)	(4)	(5)	(6)	(7)	(8)
(a) FIG NO.	(b) ITEM NO.	SMR CODE	NATIONAL STOCK NUMBER	PART NUMBER	FSCM	DESCRIPTION  USABLE ON CODE	U/M	QTY INC IN UNIT
11	37	PAOZZ	5305-00-984-6194	MS35206-246	96906	SCREW, MACHINE.....	EA	2
11	38	PAOZZ	5310-00-809-8544	MS27183-7	96906	WASHER, FLAT.....	EA	2
11	39	PAOZZ	5310-00-877-5795	MS21044N8	96906	.NUT, SELF-LOCK.....	EA	2
11	40	PAOZZ	5950-01-079-7016	DCT55-284	73662	TRANSFORMER.....	EA	1
11	41	PAOZZ	6645-01-250-3787	8041-20	45605	TIMER.....	EA	1
11	42	PAOZZ	5305-00-984-6191	MS35206-243	96906	SCREW, MACHINE.....	EA	2
11	43	PAOZZ	5310-00-045-3299	MS35338-42	96906	WASHER, LOCK.....	EA	2
11	44	PAOZZ	5310-00-809-8544	MS27183-7	96906	WASHER, FLAT.....	EA	2
11	45	PAOZZ	5945-01-079-7018	ACC120U10	04009	CONTACTOR.....	EA	1
11	46	PAOZZ	5305-00-984-6194	MS35206-246	96906	SCREW, MACHINE.....	EA	4
11	47	PAOZZ	5310-00-809-8544	MS27183-7	96906	.WASHER, FLAT.....	EA	4
11	48	PAOZZ	5310-00-877-5795	MS21044N8	96906	.NUT, SELF-LOCK.....	EA	4
11	49	PAOOO	6110-01-238-9160	30035-100	90598	STARTER ASSY, MOTOR.....	EA	1
11	50	PAOZZ	5310-00-877-5797	MS21044N3	96906	NUT.....	EA	1
11	50A	PAOZZ	6110-01-261-0620	14DP32AJ71	23826	CONTACTOR.....	EA	1
11	50B	PAOZZ	6110-01-238-9160	49AAFO	23826	AUXILIARY INTERLOCK.....	EA	1
11	50C	PAOZZ	6110-01-238-9160	49AAFC	23826	AUXILIARY INTERLOCK.....	EA	1
11	51	PAOZZ	5310-00-014-5850	MS27183-43	96906	WASHER, FLAT.....	EA	1
11	52	XDOZZ		30038-100	90598	PLATE, ADAPTER.....	EA	1
11	53	PAOZZ	6110-01-261-0620	14DP32AJ71	23826	STARTER, MOTOR.....	EA	1
11	53A	PAOZZ		E60	23826	HEATER.....	EA	3
11	53B	PBOZZ		42022	04009	HEATER, THERMAL RELE U/W P/N.....	EA	3
						ACV3303-U1.....		
11	53C	PAOZZ	5305-00-984-6194	MS35206-246	96906	.SCREW, MACHINE U/W P/N.....	EA	3
						ACV3303-U1.....		
11	53D	PAOZZ	5310-00-809-8544	MS27183-7	96906	.WASHER, FLAT U/W P/N.....	EA	3
						ACV3303-U10.....		
11	53E	PAOZZ	5310-00-877-5795	MS21044N8	96906	. NUT, SELF-LOCK U/W P/N.....	EA	1
						ACV3303-U10.....		
11	54	PAOZZ	6110-01-078-2586	ACV2303U10	04009	. STARTER, MOTOR.....	EA	1
11	55	PAOZZ	5999-00-504-9459	42011	04009	HEATER, THERMAL RELE.....	EA	3
11	56	PAOZZ	5305-00-984-6194	MS35206-246	96906	. SCREW, MACHINE.....	EA	4
11	57	PAOZZ	5310-00-809-8544	MS27183-7	96906	WASHER, FLAT.....	EA	4
11	58	PAOZZ	5310-00-877-5795	MS21044N8	96906	NUT, SELF-LOCK.....	EA	4
1159	XBOZZ			AC241-01	90598	BOX, CONTROL.....	EA	1

Change 7 36

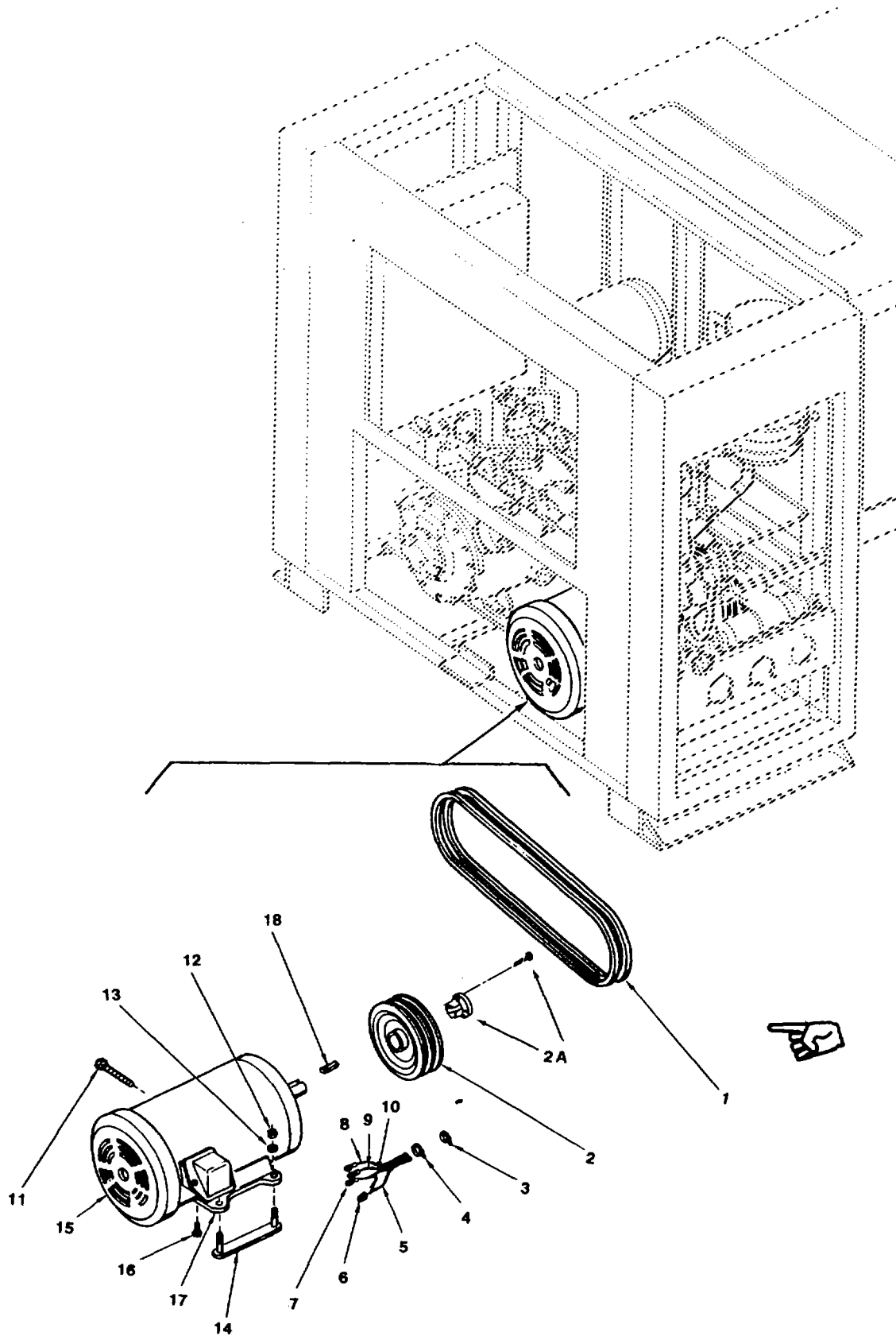
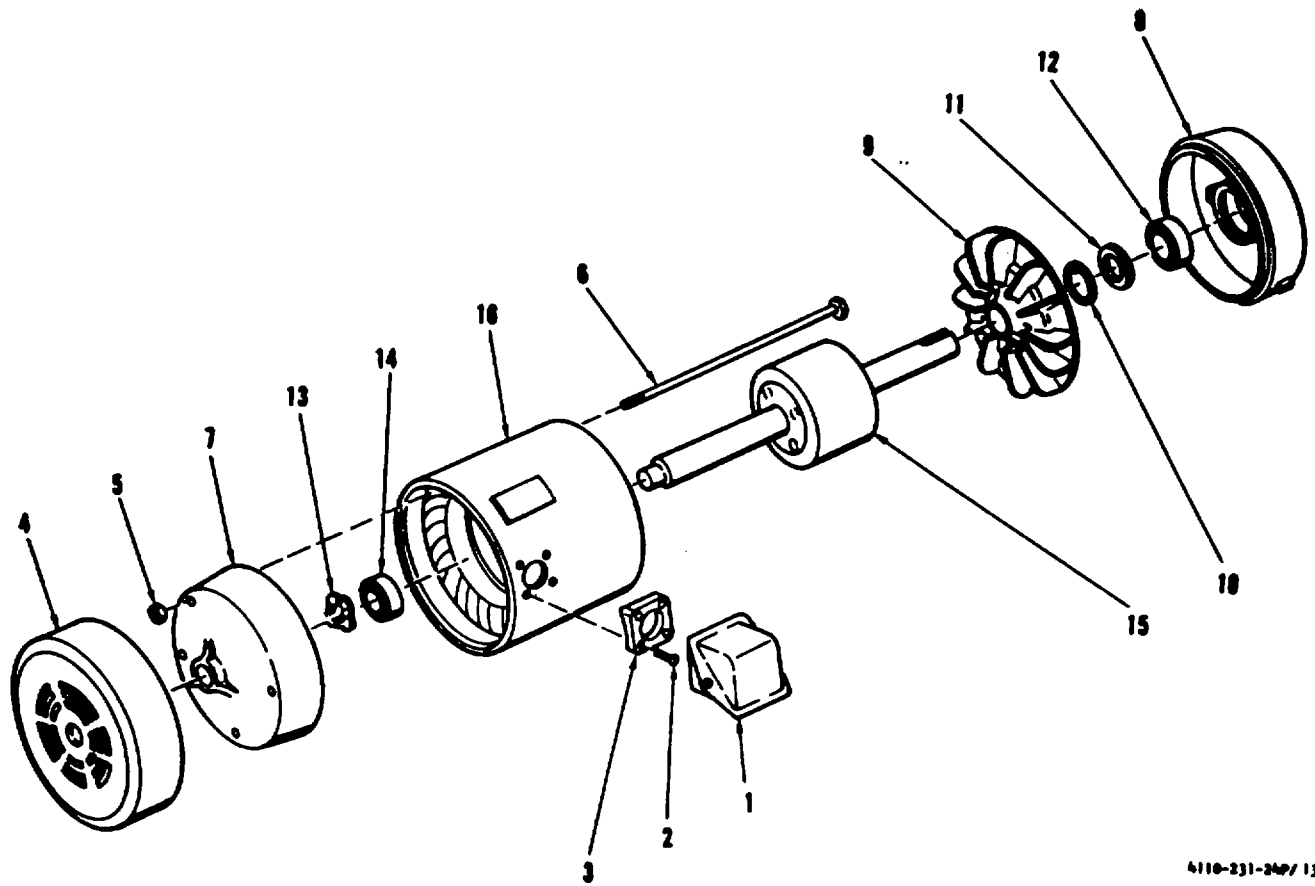


Figure 12. Compressor Motor and Drive Belts.

(1) ILLUSTRATION		(2)	(3)	(4)	(5)	(6)	(7)	(8)
(a) FIG NO.	(b) ITEM NO.	SMR CODE	NATIONAL STOCK NUMBER	PART NUMBER	FSCM	DESCRIPTION  USABLE ON CODE	U/M	QTY INC IN UNIT
12	1	PAOZZ	3030-00-565-7526	A51	24161	BELT, MATCHED PR.....	EA	1
12	2	PBOZZ		2A64B68	24161	PULLEY, GROOVE.....	EA	1
12	2A	PAOZZ		SDS1 1-8	24161	BUSHING.....	EA	1
12	3	PAOZ	5975-00-111-3208	TY524M	59730	STRAP, RETAINING.....	EA	50
12	4	PAOZZ	5975-00-074-2072	TY525M	59730	STRAP, RETAINING.....	EA	70
12	5	PAOZZ	6145-00-578-7517	M5086-1-16-9	81349	WIRE, ELECTRIC.....	EA	1
12	6	PAOZZ	5940-00-617-2711	RC6	59730	NUT, WIRE.....	EA	6
12	7	PAOZZ		10RC8FL	59730	TERMINAL, LUG.....	EA	3
12	8	PAOZZ	6145-00-578-7513	M5086-2-10-9	81349	WIRE, ELECTRIC.....	EA	1
12	9	PAOZZ	6145-00-578-7521	M5086-1-12-9	81349	WIRE, ELECTRIC.....	EA	1
12	10	PAOZZ	6145-00-578-7516	M5086-1-14-9	81349	WIRE, ELECTRIC.....	EA	1
12	11	PAOZZ		MS51054-62	96906	BOLT, ADJUSTING.....	EA	1
12	12	PAOZZ	5310-00-087-4652	MS51922-17	96906	NUT, SELF-LOCK.....	EA	4
12	13	PAOZZ	5310-00-080-6004	MS27183-14	96906	WASHER, FLAT.....	EA	4
12	14	XBOZZ		AC232-01	90598	BOLT ASSY.....	EA	2
12	15	PAOZZ		74615	92940	MOTOR, A.C.....	EA	1
12	16	PAOZZ	5306-00-225-8496	MS90725-31	96906	SCREW, CAP, HEX.....	EA	1
12	17	XBOZZ		10C01044-00-01	92940	.BASE.....	EA	1
12	18	PBOZZ		23A02741-22-00	92940	KEY, SHAFT.....	EA	1

Change 7 39



4110-231-24P/13

Figure 13. Compressor Motor

Change 7 40

(1) ILLUSTRATION		(2)	(3)	(4)	(5)	(6)	(7)	(8)
(a) FIG NO.	(b) ITEM NO.	SMR CODE	NATIONAL STOCK NUMBER	PART NUMBER	FSCM	DESCRIPTION  USABLE ON CODE	U/M	QTY INC IN UNIT
13'	1	XBOZZ		09C01042-01-00	92940	CONDUIT BOX.....	EA	1
13	2	PAOZZ	5305-00-98-1726	M35SZO6-282	9690	.SCREW.MACHINE.....	EA	1
13	3	XBOZZ		29A0131-01-00	92940	.SPACER,BOX.....	EA	1
13	4	XBOZZ		11C00557-01-00	92940	GUARE.FAN.....	EA	1
13	5	PA022	5310-00-761-A6I2	HSS1967-2	96906	.NUT, PLAIN, HEX.....	EA	4
13	6	XBOZZ		19A3515-40-00	92946	THRU-BOLT.....	EA	4
13	7	XBOZZ		07300390-06-03	92940	END BELL,S.E.....	EA	1
13	a	XBOZZ		07000389-04-03	92940	END BELL,O.S.E.....	EA	1
13	9	XBOZZ		I12 01690-01-00	92940	.FAN.....	EA	1
13	10	XBOZZ		24109285-04-00	92940	LOCKRING.....	EA	1
13	11	XBOZZ		2AO8IZ3-01-00	92940	.SPACER.BEARING.....	EA	1
13	12	PA3ZZ	3110-01-035-37C5	0409101-05-00	92940	.BEARENG ,BALL.....	EA	1
13	13	XBOZZ		2202A292-04-00	92940	.SPRING,WAVY.....	EA	1
13	14	PAOZZ		OJO09101-03-00	92940	.BEARING,BALL.....	EA	1
13	15	XBOZZ		7461SI0T	92940	.ROTOR AND SHAFT.....	EA	1
13	16	X83ZZ		74615STA	92940	.STATOR.....	EA	1
					<b>41</b>			

(1) ILLUSTRATION		(2)	(3)	(4)	(5)	(6)	(7)	(8)
(a) FIG NO.	(b) ITEM NO.	SMR CODE	NATIONAL STOCK NUMBER	PART NUMBER	FSCM	DESCRIPTION  USABLE ON CODE	U/M	QTY INC IN UNIT
						GROUP 10 - BULK ITSKS LIST		
BULK		PAOZZ	6145-00-578-7513	M5086-2-10-9	81349	WIRE ELECTRIC .....	FT	1
BULK		PAOZZ	6145-00-578-7516	M5086-1-14-9	81349	WIRE ELECTRIC .....	FT	1
BULK		PAOZZ	6145-00-578-7517	M5086-1-16-9	81349	WIRE ELECTRIC .....	FT	1
BULK		PAOZZ	6145-00-578-7521	N5086-1-12-9	81349	WIRE ELECTRIC .....	FT	
BULK		XBFZZ		MS21266-3N	96906	GROMMET,EDGING WIRE ELECTRIC.....	FT	V
BULK		XBOZZ		R4111N1/BX1/2	86730	GASKET WIRE ELECTRIC .....	FT	V
					<b>42</b>			



SECTION IV

NATIONAL STOCK NUMBER AND PART NUMBER INDEX

SECTION IV STOCK NUMBER	FIG. NO	ITEM NO	STOCK NUMBER	FIG. NO	ITEM NO
5920-00-011-7142	2	21	5305-00-269-3209	11	25
4130-00-012-6160	10	2	5305-00-269-3215	10	1
5310-00-014-5850	11	51	4730-00-289-4202	5	17
5310-00-045-3296	2	28	5975-00-296-1669	2	50
5310-00-045-3296	2	45	5975-00-296-1669	11	34
5310-00-045-3296	6	6	5320-00-469-4137	2	23A
5310-00-045-3296	11	7	5999-00-504-9459	11	55
5310-00-045-3296	11	23	4730-00-541-7182	7	31A
5310-00-045-3296	11	30	5640-00-555-3011	4	2
5310-00-045-3299	11	43	3030-00-565-7526	12	1
5310-00-045-4007	3	2	6145-00-578-7513	12	8
4310-00-061-9189	3	7	6145-00-578-7516	12	10
5305-00-068-0501	9	2	6145-00-578-7517	12	5
5305-00-068-0504	2	1	6145-00-578-7521	12	9
5305-00-068-0505	1	21	5310-00-582-5965	1	22
5305-00-068-0505	1	25	5310-00-582-5965	1	26
5305-00-068-0506	1	9	5310-00-582-5965	2	2
5305-00-068-0506	1	14	5310-00-582-5965	2	5
5305-00-068-0506	2	4	5310-00-582-5965	7	3
5305-00-068-0506	6	29	5310-00-582-5965	7	7
5305-00-068-0506	7	22	5310-00-582-5965	8	2
5305-00-068-0506	7	28	5310-00-582-5965	8	8
5305-00-068-0506	8	4	5340-00-598-0597	6	35
5305-00-068-0506	8	6	5340-00-598-4201	6	36
5305-00-068-0506	8	20	5940-00-617-2711	12	6
5940-00-073-6683	2	2	5310-00-637-9541	9	8
5975-00-074-2072	12	4	4730-00-639-9773	5	13
5310-00-080-6004	6	24	4710-00-640-1103	5	5
5310-00-080-6004	9	9	5930-00-644-0110	2	25A
5310-00-080-6004	10	2	5930-00-655-1514	2	25
5310-00-080-6004	10	13	5999-00-674-9478	11	53B
5310-00-080-6004	11	26	5975-00-714-8031	2	47
5310-00-081-4219	4	6	4730-00-720-0116	5	18
5310-00-081-4219	7	20	4730-00-720-0116	5	24
5310-00-081-4219	7	36	4820-00-752-8711	10	24
5310-00-081-8087	2	11	5310-00-761-6882	13	5
5310-00-082-1404	7	17	4820-00-775-6705	6	3
5310-00-082-1404	8	14	4130-00-803-9004	10	53
5310-00-087-4652	10	2A	4130-00-803-9006	10	50
5310-00-087-4652	11	27	5330-00-803-9021	10	42
5310-00-087-4652	12	12	4130-00-803-9024	10	40
4730-00-090-0832	3	8	5310-00-809-4058	1	10
4820-00-102-6531	5	21	5310-00-809-4058	1	15
4820-00-102-6531	6	12	5310-00-809-4058	1	23
5340-00-105-8329	6	33	5310-00-809-4058	1	27
5340-00-106-0555	6	32	5310-00-809-4058	2	6
6680-00-106-9904	6	14	5310-00-809-4058	6	30
5975-00-111-3208	12	3	5310-00-809-4058	7	24
5930-00-126-5940	2	34	5310-00-809-4058	7	27
5975-00-152-1075	2	49	5310-00-809-4058	8	3
5975-00-152-1075	11	17	5310-00-809-4058	8	7
5975-00-152-1075	11	32	5310-00-809-4058	8	19
6240-00-155-8707	2	15	5310-00-809-4058	9	4
5310-00-167-0721	2	14	5310-00-809-8544	2	32
5975-00-177-2819	11	20	5310-00-809-8544	11	38
4730-00-189-2737	7	33	5310-00-809-8544	11	44
5310-00-193-7577	2	36	5310-00-809-8544	11	47
5310-00-193-7577	2	40	5310-00-809-8544	11	53D
5310-00-194-1483	7	23	5310-00-809-8544	11	57
5340-00-200-2729	6	37	5310-00-809-8546	2	29
5340-00-200-4114	2	30	5310-00-809-8546	2	46
4710-00-203-3173	5	27	5310-00-809-8546	5	30
4710-00-203-3173	6	20	5310-00-809-8546	6	8
4710-00-203-3174	5	28	5310-00-809-8546	6	39
4730-00-203-4922	6	25	5310-00-809-8546	6	43
5310-00-209-0965	5	3	5310-00-809-8546	8	10
5310-00-209-0965	6	11	5310-00-809-8546	11	8
5306-00-225-8496	12	16	5310-00-809-8546	11	11
5306-00-225-8497	4	5	5310-00-809-8546	11	15
4820-00-226-1580	6	27	5310-00-809-8546	11	24
4730-00-228-0826	6	18	5310-00-809-8546	11	31
4730-00-228-0826	7	32	5310-00-811-3494	2	31
5940-00-230-0515	2	2	4730-00-813-3719	5	16
4730-00-231-5632	5	15	4730-00-818-3872	7	30
5940-00-232-5190	2	2	5310-00-823-8804	7	4
4730-00-235-4066	7	31	5310-00-823-8804	7	8
5340-00-251-8291	6	34	5325-00-835-6439	11	19
4730-00-263-6465	6	17	5330-00-867-5178	10	14
4730-00-264-9155	5	7	4130-00-867-5180	10	36
5305-00-269-2803	9	7	4130-00-867-5186	10	15
5305-00-269-2805	6	23	5330-00-867-5187	10	26

SECTION IV

NATIONAL STOCK NUMBER AND PART NUMBER INDEX

STOCK NUMBER	FIG. NO	ITEM NO	STOCK NUMBER	FIG. NO	ITEM NO
5310-00-877-5795	7	18	5310-00-984-3806	4	7
5310-00-877-5795	8	13	5310-00-984-3806	7	9
5310-00-877-5795	11	39	5310-00-984-3806	7	35
5310-00-877-5795	11	48	5305-00-984-4984	2	13
5310-00-877-5795	11	53E	5305-00-984-6191	11	42
5310-00-877-5795	11	58	5305-00-984-6193	7	16
5310-00-877-5797	2	29A	5305-00-984-6193	8	15
5310-00-877-5797	4	9	5305-00-984-6194	11	37
5310-00-877-5797	5	31	5305-00-984-6194	11	46
5310-00-877-5797	6	9	5305-00-984-6194	11	53C
5310-00-877-5797	6	40	5305-00-984-6194	11	56
5310-00-877-5797	6	44	6685-00-987-5600	3	6
5310-00-877-5797	8	9	5305-00-988-1726	13	2
5310-00-877-5797	11	50	5305-00-988-3784	9	3
5310-00-880-7745	5	2	5305-00-988-9106	7	21
5310-00-880-7745	6	TO	4730-00-989-1903	5	20
5305-00-889-2997	2	39	5305-00-989-7434	2	44
5305-00-889-3000	2	9	5305-00-989-7434	6	5
5305-00-889-3000	3	1	5305-00-989-7434	11	6
4820-00-893-9136	5	6	5305-00-989-7434	11	10
5340-00-917-3854	5	8	5305-00-989-7434	11	14
5310-00-877-5797	6	40	5305-00-984-6194	11	56
5340-00-917-3854	6	47	5305-00-989-7434	11	22
4130-00-922-7083	6	13	5305-00-989-7435	8	11
6685-00-924-9434	3	4	5305-00-989-7435	11	29
5330-00-929-5456	7	35	5305-00-993-848	2	27
2815-00-931-2222	10	4	5305-00-993-1848	5	29
5310-00-934-9739	2	37	5305-00-993-1848	6	7
5310-00-934-9739	2	11	5305-00-993-1848	6	38
5310-00-934-9747	3	3	5305-00-993-1848	6	42
4820-00-936-2235	6	19	5305-00-993-2461	7	2
5975-00-945-0142	2	51	5305-00-993-2463	2	52
5975-00-945-0142	11	a	5305-00-993-2738	7	6
6685-00-948-0928	3	5	5306-01-026-5035	10	22
5320-00-956-4067	1	3	5306-01-026-5035	10	28
5320-00-956-4067	1	5	5306-01-026-5037	10	44
5320-00-956-4067	1	7	5305-01-027-4957	10	18
5310-00-959-7600	1	16	5305-01-027-4957	10	25
5310-00-959-7600	6	31	5305-01-027-4958	10	10
5310-00-959-7600	7	26	5305-01-027-4958	10	12
5310-00-959-7600	8	1	5330-01-029-6301	2	7
5310-00-959-7600	8	18	4820-01-032-5714	7	14
5310-00-959-7600	9	5	5305-01-035-3576	10	6
5330-00-963-0905	10	23	3110-01-035-3705	13	12
4300-00-963-0908	10	51	5305-01-051-2646	10	3
5310-00-963-0917	10	8	5340-01-054-0068	1	2
4130-00-963-0919	10	49	5340-01-054-0068	1	8
4130-00-963-0920	10	48	4730-01-059-1295	10	13
5310-00-965-1820	11	12	6110-01-078-2586	6	54
5310-00-965-1820	11	16	6110-01-261-0620	1	53
5925-00-979-5856	2	148	6145-01-082-8320	11	4
5305-00-983-6730	2	35			
5310-00-983-8483	2	10			

PART NUMBER	FSCM	FIG. NO.	ITEM NO.	PART NUMBER	FSCM	FIG. NO.	ITEM NO.
ACC I2OUIO	04009	11	45	AC236	90598	5	19
ACV2303U10	04009	11	35	AC237	90598	5	2
AC 124-01	90598	7	25	AC238-01	90598	11	2
AC 144-01	90598	6	23	AC240	90598	11	21
AC203-01	90598	11	2	AC240-3	90598	11	5
AC206-01	90598	2	2	AC241-01	90598	11	59
AC206-22	90598	2	23	AC241-02	90598	11	28
AC206-25	90598	2	238	AC242	90598	11	36
AC208-01	90598	1	1	AC243	90598	5	10
AC213-01	90598	7	40	AC244	90598	6	1
AC215-01	90598	7	2	AC245	90598	6	2
AC21-01	90598	7	37	AC246	90598	6	45
AC217-01	90598	8	17	ADP25	08537	10	21
AC218-01	90598	8	2	ADP99	08537	10	27
AC219-01	90598	8	21	AD42ABS	07707	1	3
AC220-01	90598	1	12	AD42ABS	07707	1	5
AC220-02	90598	1	17	AD42ABS	07707	1	7
AC224-01	90598	7	2	AMG24V50/60	70255	5	23
AC225-01	90598	1	20	AMG14V503 60	70255	6	16
AC226	90598	6	21	ASTM8280.50000	81346	5	27
AC230	90598	2	3	ASTM8280I.12500	81346	5	5
AC232-01	90598	12	14	A13742	41947	3	7
AC234	90598	6	4	A2258	41947	5	24

SECTION III. NATIONAL STOCK NUMBER AND PART NUMBER INDEX

PART NUMBER	FSCM	FIG. NO.	ITEM NO.	PART NUMBER	FSCM	FIG. NO.	ITEM NO.
ACV230U10	04009	11	54	MS27183-12	96906	7	20
A28429	50831	2	42	MS27183-12	96906	7	36
A4898	41947	5	13	MS27183-14	96906	6	24
AS1	24161	12	1	MS27183-14	96906	9	9
BP44-1	10119	10	2	MS27183-14	96906	10	2
CC571	10119	10	34	MS27183-14	96906	10	13
OCG1147	08537	10	11	MS27183-14	96906	11	28
CG01155	08537	10	9	MS27183-5	96906	2	10
CG62100	03743	2	43	MS27183-6	96906	7	17
CK547	08537	10	53	MS27183-6	96906	8	14
CO-05HLF(5/10)0750	81349	11	4	MS27133-7	96906	2	32
DCTS5284	73662	11	40	MS27183-7	96906	11	38
E60	23826	11	53A	M527183-7	96906	11	44
F02A125V10A	81349	2	21	M527183-7	96906	11	47
FTA250	59730	2	14C	M527183-7	96906	11	53D
FJ6C212	58553	5	8	M527183-7	96906	11	57
FJ6C212	58553	8	47	M527183-8	96906	2	29
GA1010	10119	10	26	M527183-8	96906	2	46
GAI116	10119	10	48	M527183-8	96906	5	30
GA1775	10119	10	19	M527183-8	96906	6	8
GA1778	08537	10	5	M527183-8	96906	6	39
GA1779	10119	10	35	MS27183-8	96906	6	43
GA1780	08537	10	33	MS27183-8	96906	8	10
GA1781	10119	10	36	MS27183-8	96906	11	8
GA1784	08537	10	47	MS27183-8	96906	11	11
GA1794	10119	10	45	MS27183-8	96906	11	15
GA1820	08537	10	23	MS271838	96906	11	24
O OA210	08537	10	31	MS27183-8	96906	11	31
GA211	08537	10	29	MS27183-9	96906	7	4
GA212	08537	10	30	MS27183-9	96908	7	8
GA213	08537	10	32	MS27183-43	96906	11	51
OA480	08537	10	20	MS27211-2	96906	3	6
GA481	08537	10	51	M527900-1C	96906	3	5
GA1089	10119	10	14	MS27900-1P	96906	3	4
GC1156	10119	10	49	MS35058-22	96906	2	25
3C1162	10119	10	15	MS35191-289	96906	9	3
GC1435	08537	10	7	MS35191-292	96906	7	21
GKT298	10119	10	42	MS35206-215	96906	2	39
OKT375	10119	10	16	MS35206-218	96906	2	35
GRG96	08537	10	52	MS35208-227	96906	2	13
HE1050	19133	2	148	MS35206-230	96906	2	9
HKP-HH	71400	2	22	M535206-230	96906	3	1
MS 1779811	98908	6	14	M535206-243	96906	11	42
MS 17821-1	96906	6	48	MS35206-245	96906	7	16
MS 17846-9	96906	5	6	MS35206-245	96906	8	15
MS17982-4	96906	7	14	MS35206-248	96906	11	37
MS21044N3	96906	11	50	MS35206-246	96906	11	46
MS21044N8	98906	11	53E	MS35206-246	96906	11	53C
MS21044178	96906	2	11	MS35206-246	96906	11	58
MS21044178	96906	2	31	MS35206-282	96906	13	2
MS2104413	96906	2	29A	M535207-263	96906	2	44
MS2104443	96906	4	9	MS35207-263	96906	6	5
MS2104443	96906	5	31	MS35338263	96906	7	3
MS2104443	96906	6	9	MS35207-263	96906	11	6
MS2104443	96906	6	40	MS35207-263	96906	11	10
MS2104443	98906	6	44	MS35207-263	96906	11	14
M52104443	96906	8	9	MS35207-263	96906	11	22
MS2104448	96906	7	19	MS35207-264	96906	8	11
MS2104448	96906	8	13	MS35207-264	96906	11	29
MS2104448	96906	11	48	M535207-265	96906	2	27
MS2104448	96906	11	53	MS35207-265	96906	5	29
MS2104448	96906	11	58	MS35207-265	96906	6	7
MS2104448	96906	11	39	MS35207-265	96906	6	38
MS21266-34	96906	7	38	MS35207-265	96906	6	42
MS21919DG11	96906	6	36	MS35207-279	96906	2	52
MS219190G14	98906	6	37	MS35207-280	96906	7	6
MS21919DG2	96906	6	32	MS35207-281	96906	7	2
MS21919DG5	98906	6	33	MS35333-36	96906	2	36
MS21919DG7	96906	6	34	MS35333-36	96906	2	40
MS21919DO8	96906	6	35	MS3533341	96906	2	14
MS27183-10	96906	1	10	MS35333-44	96906	7	23
MS27183-10	96906	1	15	MS35338-41	96906	3	2
MS27183-10	96906	1	23	MS35338-42	96906	11	43
MS27183-10	96906	1	27	M535338-43	96906	2	28
MS27183-10	96906	7	24	MS35338-43	96906	11	7
MS27183-10	96906	7	27	MS35338-43	96906	11	23
MS27183-10	96906	8	3	MS35338-43	96906	11	30
MS27183-10	96906	8	7	MS35338-44	96906	1	22
MS27183-10	96906	8	19	MS35338-44	96906	1	26
MS27183-12	96906	4	6	MS35338-44	96906	2	5

SECTION III. NATIONAL STOCK NUMBER AND PART NUMBER INDEX

PART NUMBER	FSCM	FIG. NO.	ITEM NO.	PART NUMBER	FSCM	FIG. NO.	ITEM NO.
M535338-44	96906	7	3	R10470X 1-4	71643	4	2
MS35338-44	96906	7	7	R41 IN125THK	82942	2	7
M535338-44	96906	8	2	R4 II NI/BXI/2	86730	4	2
MS35338-44	96906	8	8	R4111N I/8X1/2	86730	11	33
MS35338-46	96906	9	8	D503485	07707	2	23A
M535338-47	96906	5	3	SL-J8M	96103	5	26
MS35338-47	96906	6	1	SL-J9M	96103	5	4
MS35649-242	96906	2	37	TY524M	59730	12	3
MS35649-242	96906	2	41	TY525M	59730	12	4
M535649-262	96906	3	3	U8875	28520	11	20
MS35829- 10	96906	1	2	VAL615	10119	10	24
M535829-1 10	96906	1	8	VAL617	10119	10	17
MS35845-3	96906	6	13	VJS3-46AC	07295	6	19
M535871-2-2F	96906	5	17	V3L131D8	91929	2	34
MS35872-2	96906	7	33	WAS78	08537	10	53
MS35872-4	96906	7	32	W1022	41947	5	7
MS35922-97	96906	7	30	W2644	41947	7	31A
M535928-9	96906	7	31	W3326	41947	5	16
MS35929-4	96906	6	17	W4002	41947	6	25
MS51023-125	96906	4	3	w4043	41947	5	20
M51054-62	96906	12	1	010P10o	10119	10	41
MS51922-17	96906	10	2A	011P0lo	10119	10	44
M551922-17	96906	11	27	Olipil	10119	10	22
MS51922-17	96906	12	12	OoiPI 1	10119	10	28
MS51922-3	96906	11	12	012PO11	10119	10	4
MS51922-3	96906	1	15	012PI 1	08537	10	3
MS51922-5	96906	1	15	012P13	10119	10	18
M551922-5	96906	6	31	012P13	10119	10	25
M551922-5	96906	7	26	012PI9	10119	10	10
MS51922-5	96906	8	1	012PI9	10119	10	12
M551922-5	96906	8	13	0166P0S	08537	10	34
MS51922-5	96906	9	5	0166P09	10119	10	6
M551922-9	96906	4	7	04A09101-0200	92940	4	15
MS51922-9	96906	7	19	04A09101'03-00	92940	4	14
M551922-9	96906	7	35	04A09101-03-00	92940	13	14
M551967-2	96906	13	5	04A09101-05-00	92940	13	12
MSS1968-11	96906	5	2	055P70	08537	10	39
MS51968-1 I	96906	6	10	055P70	10119	10	13
MS90725-31	96906	12	15	055P80	10119	10	46
M590725-32	96906	4	5	065P14	08537	10	38
M590725-5	96906	9	2	066P08	10119	10	8
M59072558	96906	11	25	07C03113-03- I 0	92940	4	10
M590725-65	96906	10	1	07C03113-04-17	92940	4	12
MS907263	96906	2	1	07D00389-04-03	92940	13	8
M590726-5	96906	1	21	07D00390-0603	92940	13	7
MS907265	96906	1	25	09B04009-01 00	92940	4	18
MS907266	96906	1	9	098B01042-0100	92940	13	1
M590726-6	96906	1	14	IOC01044.00-01	92940	12	17
MS90726-6	96906	2	4	IORC8FL	59730	12	7
MS90726-6	96906	6	29	1 1 C0055701-00	92940	13	4
M590726-6	96906	7	22	118-026722-005	65586	8	12
MS90726-6	96906	7	28	I12C01690-01-00	92940	13	9
M5907266	96906	8	4	13MC4-104-40	82647	2	12
M5907266	96906	8	6	14DP32AJ71n	23826	11	53
MS90726-6	96906	8	20	141	59730	2	49
MS90726-60	96906	9	7	141	59730	11	17
M590726-62	96906	6	23	141	59730	11	32
M5086-1-12-9	81349	12	9	143	59730	2	47
MOS6-I-14-9	81349	12	10	166V86156	11897	2	14A
M54 I-16-9	81349	12	5	1579X5	58553	7	34
M5062-.109	81349	12	8	1519	72619	2	15
N1030	97539	2	23A	19A01254-14-00	92940	4	11
PIT210	08537	10	37	19A3515-40-00	92940	13	6
PLIT580	08537	10	43	2A64868SDSI 1-8	24161	12	2
PHP83A	10119	10	40	200(A454TANG24V 70255	5	22	
PTI	87698	4	2	200RA454TANG24V	70255	6	15
PT204401	73475	11	9	206406-402-331 -[55-1.536 IN LDS	82647	7	15
PT21-4401	73475	11	13	21585	58553	5	21
RB821	59730	2	2	215-85	58553	6	12
RB187	59730	2	2	21955	70485	11	19
RB2217	59730	2	2	22A02292'02-00	92940	4	13
RB2237	59730	2	2	22AO2292-4-00	92940	13	13
R5250	59730	2	2	23AO2741-22-00	92940	12	18
R8713	59730	2	2	239AW 1170200-503	91494	5	25
RC2227	59730	2	2	24A09285504-00	92940	13	10
RC2227	59730	11	3	2520	59730	2	51
RC2237	59730	11	3A	2520	59730	11	18
RC6	59730	12	6	2521	59730	2	50
RTV732	71984	7	2	2521	59730	11	34
R10470	114X314	71643	117A	2522	59730	11	35
				28A05622-0300	92940	4	14

SECTION IV.

NATIONAL STOCK NUMBER AND PART NUMBER INDEX

PART NUMBER	FSCM	FIG. NO.	ITEM NO.	PART NUMBER	FSCM	FIG. NO.	ITEM NO.
28A08256-01-00	92940	13	1	604837	90598	6	26
29A01631-01-0	92940	13	3	604839	90598	5	9
29A08287-01-00	92940	4	20	604841	90598	4	2
29A08287-02-00	92940	4	19	604900-101	90598	6	22
30000	90598	8	5	605X1	58553	6	27
30001	90598	7	1	605035	90598	7	10
30002	90598	7	5	605036	90598	7	11
30005	90598	1	18	605055	90598	7	12
30006	90598	1	19	605057	90598	6	41
30007	90598	2	38	605458	90598	9	6
30008	90598	1	6	605459	90598	8	23
30009	90598	2	33	605468	90598	7	29
30016	90598	7	13	605491	90598	9	1
30017	90598	8	16	605499-01	90598	1	8
30022-1	90598	1	28	605499-02	90598	1	13
30022-2	90598	1	29	605511	90598	1	4
30023	90598	1	30	605517	90598	4	1
30024	90598	1	31	605518	90598	1	2
30029	90598	8	22	605530	90598	4	4
30032	90598	1	24	6055530	90598	7	39
30035-100	90598	11	49	6068100	58553	6	3
30038-100	90598	11	52	625F 114	30327	5	14
321A	61463	2	30	64OF81/4	30327	5	12
4201 1	04009	11	53	641FS1-2	30327	6	18
42224	04009	11	538	641FS1/4	30327	5	1
4230T0135	5/81D	24161	79	74615	92940	12	15
425XBX 148-24AC	78290	2	26	746151OT	92940	13	15
46X4	79470	3	8	7461SSTA	92940	13	16
49 114x 18	30327	5	15	8041-20	45605	11	41
534FC	90598	11	1	85-5710-0841-203	72619	2	16
534MP	90598	11	2	85-5710-0842-203	72619	2	17
56181-00	16476	2	8	85-57104843-203	72619	2	18
604218	92940	4	8	85-5710-0844-203	72619	2	19
604218RDT	92940	4	17	85-5710-0845-203	72619	2	20
604218STA	92940	4	21	8801KI7	27191	2	24

Change 6 47

**SECTION IV SUPPLEMENTAL NATIONAL STOCK NUMBER AND PART NUMBER INDEX**

STOCK NUMBER	FIG.	ITEM	STOCK NUMBER	FIG.	ITEM
5305-00-019-2413	10OA	70	3120-00-812-2382	10A	62
5330-00-034-8627	10A	65	5330-00-812-2395	10A	48
5310-00-087-7493	10A	8	4130-00-816-3941	10A	32
4730-00-090-0832	10A	3	5310-00-914-0429	10A	33
4730-00-110-4010	10A	44	5305-00-942-2196	10A	7
4730-00-189-2737	10A	1	5315-00--956-5683	10A	15
5305-00-225-8507	10A	25	5330-00-977-7740	10A	58
4830-00-257-2098	10A	4	5935-01-076-5719	11	1
5315-00-260-0712	10A	41	6110-01-078-2586	11	55
4730-00-260-8284	10A	2	5945-01-078-2934	11	3A
5310-00-298-9284	10A	9	5945-01-078-7018	11	45
4820-00-316-2659	10A	23	5930-01-080-6241	11	13
4820-00-339-4818	10A	61	5930-01-080-6244	11	9
5305-00-378-2804	10A	11	4540-01-080-7214	8	12
5305-00-378-2804	10A	28	5935-01-084-5772	11	2
4130-00-453-6272	10A	17	4130-01-091-9159	10A	10
5360-00-508-0641	10A	40	5305-01-097-8792	10A	46
4130-00-508-0642	10A	67	5305-01-102-1783	10A	34
5945-00-551-2446	11	3	5330-01-110-9276	10OA	38
5305-00-577-5462	10A	56	5330-01-111-9287	10A	24
4130-00-620-7000	10A	68	5330-01-111--9287	10A	27
5310-00-687-8571	10A	51	5330-01-111-9288	10A	30
5310-00-687-8571	10A	53	2805-01-123-4925	10A	59
4130-00-719-4809	10A	54	2990-01-124-6175	10A	37
4130-00-719-4810	10A	55	4310-01-129-7908	10A	60
5360-00-709-5463	10A	49	3110-01-129-9017	10A	57
4130-00-785-5132	10A	31	5330-01-133-0749	10A	45
4130-00-785-5312	10A	39	4130-01-136-9815	10A	14
4130-00-795-0345	10A	35	5305 01-149-6263	10A	52
5330-00-809-9573	10OA	18	5330-01-193-1264	10	16
5330-00-809-9573	10A	21	6645-01-250-3787	11	41

**SECTION IV. NATIONAL STOCK NUMBER AND PART NUMBER INDEX**

PART NUMBER	FSCM	FIG. NO.	ITEM NO.	PART NUMBER	FSCM	FIG. NO.	ITEM NO.
AA06BR199	10855	10A	46	5D213-143	10855	10A	45
AA06BR2100	10855	10A	11	5D23-243	10855	10A	43
AAA06BR200	10855	10A	28	5D40-1033	10855	10A	64
AA06BR202	10855	10A	42	5D40-1162	10855	10A	29
AA06BR203	10855	10A	19	5D40-1183	10855	10A	30
AA06BR205	10855	10OA	16	5D40-1311	10855	10A	62
AA06BR228	10855	10A	63	5D43-1013	10855	10A	26
AA06BR230	10855	10A	56	5D43-1-23	10855	10A	20
AA06BR237	10855	10A	34	5D43-1103	10855	10A	14
AB44AA126	10855	10A	52	5D43-132	10855	10A	37
AB44AA166	10855	10A	50	5D43-130A	10855	10A	10
AL81AF083	10855	10A	70	5D43-253	10855	10OA	71
AU04AB201	10855	10A	13	5D43-259	10855	10A	72
AU11AR201	10855	10A	12	5F20--1631	10855	10A	33
AU61ML171	10855	10A	51	5F20-781	10855	10A	32
AU61ML171	10855	10A	53	53576-19	94833	10A	9
A06BR205	10855	10A	22	6D23-1421	10855	10A	18
A345	41947	10A	4	6D23-1421	10855	10A	21
A4544	41947	10A	2	6D23-522	10855	10A	68
A4622	41947	10A	3	6D40-1021	10855	10A	40
A5051	41947	10A	1	6D40-1022	10855	10A	58
CA63AA001	10855	10A	69	6D40-103	10855	10A	67
ECN-60	72076	10A	17	6D40-1043	10855	10A	65
EN07AA348	10855	10A	23	6D40-1061	10855	10A	48
MS20066-229	96906	10A	15	6D40-1092	10855	10A	66
MS27183-13	96906	10OA	8	6D40-1112	10855	10A	49
MS90725-43	96906	10A	25	6D40-112	10855	10A	31
MS90728-60	96906	10A	7	6D40-1131	10855	10A	24
05DA400193	10855	10A	60	6D40-1131	10855	10A	27
05DA400324	10855	10A	57	6D40-1171	10855	10A	54
05DA500153	10855	10A	38	6D40-1191	10855	10A	55
12075-1-96000	94833	10A	6	6D40-162	10855	10A	61
12076-3-1500	94833	10A	5	6D40-2163	10855	10A	35
17-55001	10855	10A	36	6D40-1072	10855	10A	39
17-56026	10855	10A	59	7J1-6032	10855	10A	47
5D23-1002	10855	10A	44	7J1-6032	10855	10A	41

\*U.S. GOVERNMENT PRINTING OFFICE: 1994 - 555-028/00255

By Order of the Secretary of the Army:

Official:

J. C. PENNINGTON  
*Major General, United States Army*  
*The Adjutant General*


E. C. MEYER  
*General, United States Army*  
*Chief of Staff*

DISTRIBUTION:

To be distributed in accordance with DA Form 12-25C, Organizational Maintenance requirements for Refrigeration Equipment.

**\*U.S. GOVERNMENT PRINTING OFFICE: 1993 - 342-421/61735**

RECOMMENDED CHANGES TO EQUIPMENT TECHNICAL PUBLICATIONS



**SOMETHING WRONG WITH THIS PUBLICATION?**

THEN... JOT DOWN THE DOPE ABOUT IT ON THIS FORM, CAREFULLY TEAR IT OUT, FOLD IT AND DROP IT IN THE MAIL!

FROM: (PRINT YOUR UNIT'S COMPLETE ADDRESS)

DATE SENT

PUBLICATION NUMBER	PUBLICATION DATE	PUBLICATION TITLE
--------------------	------------------	-------------------

BE EXACT... PIN-POINT WHERE IT IS				IN THIS SPACE TELL WHAT IS WRONG AND WHAT SHOULD BE DONE ABOUT IT:
PAGE NO.	PARA-GRAPH	FIGURE NO.	TABLE NO.	

TEAR ALONG PERFORATED LINE

PRINTED NAME, GRADE OR TITLE, AND TELEPHONE NUMBER	SIGN HERE:
--	------------



## The Metric System and Equivalents

### Linear Measure

1 centimeter = 10 millimeters = .39 inch  
 1 decimeter = 10 centimeters = 3.94 inches  
 1 meter = 10 decimeters = 39.37 inches  
 1 dekameter = 10 meters = 32.8 feet  
 1 hectometer = 10 dekameters = 328.08 feet  
 1 kilometer = 10 hectometers = 3,280.8 feet

### Weights

1 centigram = 10 milligrams = .15 grain  
 1 decigram = 10 centigrams = 1.54 grains  
 1 gram = 10 decigrams = .035 ounce  
 1 dekagram = 10 grams = .35 ounce  
 1 hectogram = 10 dekagrams = 3.52 ounces  
 1 kilogram = 10 hectograms = 2.2 pounds  
 1 quintal = 100 kilograms = 220.46 pounds  
 1 metric ton = 10 quintals = 1.1 short tons

### Liquid Measure

1 centiliter = 10 milliliters = .34 fl. ounce  
 1 deciliter = 10 centiliters = 3.38 fl. ounces  
 1 liter = 10 deciliters = 33.81 fl. ounces  
 1 dekaliter = 10 liters = 2.64 gallons  
 1 hectoliter = 10 dekaliters = 26.42 gallons  
 1 kiloliter = 10 hectoliters = 264.18 gallons

### Square Measure

1 sq. centimeter = 100 sq. millimeters = .155 sq. inch  
 1 sq. decimeter = 100 sq. centimeters = 15.5 sq. inches  
 1 sq. meter (centare) = 100 sq. decimeters = 10.76 sq. feet  
 1 sq. dekameter (are) = 100 sq. meters = 1,076.4 sq. feet  
 1 sq. hectometer (hectare) = 100 sq. dekameters = 2.47 acres  
 1 sq. kilometer = 100 sq. hectometers = .386 sq. mile

### Cubic Measure

1 cu. centimeter = 1000 cu. millimeters = .06 cu. inch  
 1 cu. decimeter = 1000 cu. centimeters = 61.02 cu. inches  
 1 cu. meter = 1000 cu. decimeters = 35.31 cu. feet

## Approximate Conversion Factors

To change	To	Multiply by	To change	To	Multiply by
inches	centimeters	2.540	ounce-inches	newton-meters	.007062
feet	meters	.305	centimeters	inches	.394
yards	meters	.914	meters	feet	3.280
miles	kilometers	1.609	meters	yards	1.094
square inches	square centimeters	6.451	kilometers	miles	.621
square feet	square meters	.093	square centimeters	square inches	.155
square yards	square meters	.836	square meters	square feet	10.764
square miles	square kilometers	2.590	square meters	square yards	1.196
acres	square hectometers	.405	square kilometers	square miles	.386
cubic feet	cubic meters	.028	square hectometers	acres	2.471
cubic yards	cubic meters	.765	cubic meters	cubic feet	35.315
fluid ounces	milliliters	29,573	cubic meters	cubic yards	1.308
pints	liters	.473	milliliters	fluid ounces	.034
quarts	liters	.946	liters	pints	2.113
gallons	liters	3.785	liters	quarts	1.057
ounces	grams	28.349	liters	gallons	.264
pounds	kilograms	.454	grams	ounces	.035
short tons	metric tons	.907	kilograms	pounds	2.205
pound-feet	newton-meters	1.356	metric tons	short tons	1.102
pound-inches	newton-meters	.11296			

## Temperature (Exact)

°F	Fahrenheit temperature	5/9 (after subtracting 32)	Celsius temperature	°C
----	------------------------	----------------------------	---------------------	----

